

DIRECTIONS FOR USE

MODEL VB4

Table of Contents

Regulatory Information	3
Support	3
Warnings and Caution	4
Requirements Checklists	5
Cables and Accessories	5
Computer and Software Requirements	5
Additional Requirements	5
VitalsBridge™ Overview	6
Overview of the VitalsBridge Setup	8
Power on the VitalsBridge	9
Internal Battery	10
Connect Patient Monitor Cables and Sensors to the VitalsBridge	11
Pulse Oximetry (SpO₂) (All Models)	11
Configuring SpO ₂	11
Mock SpO ₂ Probe (Optional).....	13
Non-invasive Blood Pressure (NBP) (All Models)	13
Temperature (All Models)	15
Electrocardiogram (ECG) and Respiration (select configurations)	16
Invasive Blood Pressure (IBP) (select configurations)	17
Capnography (select configurations)	17
Overview	17
Using the Portable CO ₂ Regulator	18
Install or Remove the CO ₂ Cartridge	18
Capnography Configuration (Sidestream versus Mainstream CO ₂)	20
Install and Run the VitalsBridge Connector Software	24
VitalsBridge Connector (Windows PC)	24
Installation	24
Run the VitalsBridge Connector Software	25
Connect the VitalsBridge to the Connector Software	25
VitalsBridge Connector App (Android)	26
VitalsBridge Connector App (iOS)	26

VitalsBridge Directions for Use

Establish Communication with the VitalsBridge	27
Overview:.....	27
Establishing the VitalsBridge – PC Connection.....	27
Bluetooth LE.....	27
USB cable	28
Ethernet/WiFi	29
How to Use the VitalsBridge Connector Software.....	30
Manual Adjustment of Vital Signs.....	31
Pulmonary Capillary Wedge Pressure Simulation (select configurations)	31
Saved States	32
Calibration and Zeroing.....	33
SpO ₂ Calibration.....	33
Temperature Calibration Selection.....	36
CO ₂ Calibration (select configurations).....	37
Invasive Blood Pressure Zeroing (select configurations)	37
Other Configuration Settings and Features	39
Setting the VitalsBridge Name.....	39
Use the VitalsBridge with a Mobile Device.....	40
Use the VitalsBridge with a Patient Simulator	41
Standardized Patients and Low-Fidelity Patient Simulators.....	41
Laerdal High-Fidelity Patient Simulators.....	41
Control Vital Signs for the VitalsBridge and the Patient Simulator	44
Hints for Increasing Simulation Realism	45
Props.....	45
VitalsBridge Placement	45
Frequently Asked Questions.....	46
General Use and Connectivity.....	46
SpO₂	46
Non-invasive Blood Pressure	46
CO₂.....	47
Invasive Blood Pressure	47
Respiration by ECG Impedance.....	48
Temperature.....	48

Regulatory Information

Use statement: The VitalsBridge is for use in the United States, Canada and in CE marking countries.

Federal Communications Commission Statement: This device complies with part 15 Subpart B of the FCC rules.



Caution: Only use cables supplied with the VitalsBridge and accessories approved for use with the VitalsBridge. Changes or modifications not expressly approved by the party responsible for compliance could void the user's authority to operate the equipment.



Disposal/Recycling: Recycle and dispose of in accordance with all governing requirements and regulations. The VitalsBridge contains a Li-ion battery, which should be recycled.



The VitalsBridge instrumentation and its associated cables are latex free.

Support

For technical assistance, contact VitalsBridge customer support.

E-mail: support@vitalsbridge.com

Phone: 1-435-200-3402 1-801-484-3820

Disclaimer

Use of the VitalsBridge to train personnel should be conducted under supervision of suitably trained medical personnel with an understanding of clinical monitoring, patient simulation educational principles, and recognized medical protocols. As with all simulation training devices, there may be approximations, variations, and inaccuracies in the information being presented. The VitalsBridge is not a medical device and should not be used on or in conjunction with patients.

Global Warranty

The VitalsBridge has a 1-year limited warranty; see www.vitalsbridge.com or contact support@vitalsbridge.com for additional details and warranty options.





Manufacturer

The VitalsBridge™ is made in the USA and is manufactured by:

Dynasthetics, LLC
3487 W. 2100 S. #300
Salt Lake City, Utah, 84119
USA

Warnings and Caution



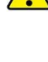

The VitalsBridge is intended solely for use during patient simulation. It is not a medical device.

-  *Warning:* Never connect the VitalsBridge to a patient.
-  *Warning:* Never connect the VitalsBridge to a vital signs monitor that is connected to or in use by a patient.
-  *Warning:* The VitalsBridge is not waterproof. Protect the VitalsBridge in damp conditions and keep away from liquids.
-  *Warning:* The VitalsBridge contains a lithium-ion battery, which, if damaged, could cause risk of fire or explosion.

Follow all cautions and warnings outlined with your patient simulator's Directions for Use.



Compressed Gases and Regulators (select configurations)

If your VitalsBridge 4 is configured for capnography, it is supplied with a portable gas regulator that uses cartridges of highly pressurized CO₂. Take care when handling these cartridges as they pose a potential risk of injury if used improperly. Cartridges should be stored and operated at temperatures below 120° F (49° C) and punctures should be prevented. They should not be heated. Do not inhale the gas. Adequate training and expertise are required to work with compressed gases.

-  *Warning:* Do not use compressed oxygen (fire hazard) or any other flammable substance with or near the VitalsBridge.
-  *Warning:* compressed CO₂ cartridges may become extremely cold when discharging. Protect eyes and hands when installing and handling cartridges.
-  *Warning:* Mishandled compressed CO₂ cartridges may become projectiles.
-  *Caution:* Compressed CO₂ cartridges may **not** be transported by air.

Defibrillation Hazards:

During defibrillation the defibrillator and VitalsBridge may present a shock hazard. All standard safety precautions must be taken when using a defibrillator with a patient simulator and VitalsBridge.

-  *Warning:* Select configurations: Defibrillation on the ECG connectors of the VitalsBridge will damage the internal electronics and may cause personal injury.
-  *Warning:* Never connect any cables from the VitalsBridge to the designated defibrillator connectors on your patient simulator.

Requirements Checklists

Cables and Accessories

Please verify that your shipment includes all the parts selected for your custom vital signs configuration. If you are missing any of these items, have damaged items, or need extras, please contact VitalsBridge™ customer support for replacements.

1. VitalsBridge power supply, 9V, with wall plug
2. Non-Invasive Blood Pressure (NBP) parts kit (array of adapters to connect VitalsBridge to NBP cable on patient monitor)
3. SpO₂ adapter and mock probe kit
4. Temperature transducer cables (up to 2) or patient monitor temperature cable
5. USB cable for optional serial (RS-232) communication with the VitalsBridge
6. Ethernet cable for optional hard-wire network communication with the VitalsBridge
7. Invasive blood pressure transducer cables (available for select configurations)
8. Portable CO₂ Regulator (available for select configurations)

Computer and Software Requirements

1. VitalsBridge Connector Application: Windows 8, 8.1, 10, or 11 operating system (see www.vitalsbridge.com/downloads/)
2. VitalsBridge Connector Mobile App: Android operating system (5.0 or Higher), iOS
3. Software used to control your patient simulator or to simulate a standardized patient (optional)
4. Ethernet (LAN), wireless network (WLAN), Bluetooth, or serial (RS-232) communication capability

Additional Requirements

1. VitalsBridge instrumentation
2. Commercially available vital signs monitor
3. AC power source (i.e., a wall outlet)
4. Source of compressed CO₂: the supplied portable CO₂ regulator and cartridges, or another external CO₂ source, regulated to 15 – 20 PSI (select configurations only)

VitalsBridge™ Overview

The VitalsBridge is a device that allows simulated or digitized vital signs to be presented on real vital signs monitors. It is intended to increase the realism and effectiveness of simulations by allowing users to view, interact with, and control real patient monitors that are used in their clinical practice.



Vital signs can be easily controlled from the VitalsBridge Connector Software or mobile app. The VitalsBridge can also be connected to patient simulator software allowing for vital sign changes in a patient simulator to be seamlessly updated on the real patient monitor.

Whether you are using a low-fidelity simulator, a high-fidelity simulator, or a standardized patient, the VitalsBridge presents increased opportunities for enhanced simulation experiences, heightened training and education on clinical monitoring, and improved patient information systems testing, just to name a few.



All VitalsBridge models are compatible with modern patient monitors and can be used with any manikin or standardized patient. Certain manikin instructor applications feature direct integration with the VitalsBridge. Each model also includes battery backup for increased portability.

VitalsBridge Directions for Use

Each custom VitalsBridge4 configuration supports different vital signs and the VitalsBridge software automatically detects the configuration. Your VitalsBridge is configured with chosen options at the time of order and additional options may be added as an upgrade. If you are unsure which options your VitalsBridge has, please contact VitalsBridge Support, page 3). Options are detailed in the table below:

VitalsBridge4 Base Unit	
Includes SpO ₂ , Non-Invasive Blood Pressure (NIBP), Temperature 1, Cable and Sensor Kit	
Add-Ons	Electrocardiogram (ECG)
	Temperature 2
	Arterial Blood Pressure (ABP)
	Pulmonary Artery and Central Venous (PAP and CVP)
	Intracranial Pressure (ICP)
	Capnography (CO ₂) - Mainstream or Sidestream
VitalsBridge4 Standard Configuration	
Includes SpO ₂ , NIBP, Temperatures 1 & 2, ECG, ABP, PAP & CVP, CO ₂ , Cable and Sensor Kit	
VitalsBridge4 Standard Configuration Plus ICP	
Includes SpO ₂ , NIBP, Temperatures 1 & 2, ECG, ABP, PAP & CVP, ICP, CO ₂ , Cable and Sensor Kit	

Overview of the VitalsBridge Setup

Upon initial setup, is best to configure the VitalsBridge in stages. Each step is listed below but is described in detail in subsequent pages.

Power on the VitalsBridge

- See page 9.

Connect Patient Monitor Cables and Sensors to the VitalsBridge

- Step-by-step instructions start on page 11.
- Connect your VitalsBridge to your monitor using the pieces of the sensor and cable kit that was included with your VitalsBridge.

Install the VitalsBridge Connector Software

- Step-by-step instructions start on page 244.
- Install the software that sends simulated vital signs from a Windows PC or Android mobile device to the VitalsBridge.

Establish Communication with the VitalsBridge

- Step-by-step instructions start on page 27.
- Connect to the VitalsBridge using a Windows PC or an Android mobile device.
- Establish a connection and communicate with the VitalsBridge over Bluetooth, USB, Wi-Fi, or Ethernet.

Depending on your simulation equipment and scenario, some additional information may be helpful.

Use the VitalsBridge with a Patient Simulator

- Step-by-step instructions start on page 41.
- Communication between the VitalsBridge and Laerdal simulators using LLEAP is available through the VitalsBridge Connector software.
- The VitalsBridge can be used with a Standardized Patient.

Power on the VitalsBridge

To power the VitalsBridge via wall power, simply connect the external power adapter and plug into any standard wall outlet.

⚠ Warning: Use only the included 9V power supply. Prior VitalsBridge models used a different voltage for their power supply. Using an incorrect power supply may damage the VitalsBridge and void the warranty.



The VitalsBridge is turned on by simply pressing the power button in the lower left corner of the top surface of the device (hold for 1 second). Once powered on, the VitalsBridge takes approximately 1 minute to initialize. The LED below the battery will flash when the VitalsBridge is initializing and become solid once initialized.



Check the status indicator lights on top of the VitalsBridge instrumentation to determine power and connectivity.

VitalsBridge Directions for Use

The VitalsBridge instrumentation has 5 LEDs: Power, battery/charge, USB/Serial, Bluetooth and LAN/Wi-Fi.

- Power indicator:
 - o No light: switched off, or switched on and the VitalsBridge is not plugged into an outlet
 - o Solid: switched on and power available to the VitalsBridge

- Battery/Charge indicator:
 - o No light: VitalsBridge is not running
 - o Solid: VitalsBridge is on, battery charge > 15%
 - o Flashing every 1 second: unit is running on low battery charge < 15%

- USB/Serial:
 - o No light: USB is not ready
 - o Solid: USB is ready

- Bluetooth:
 - o No light: Bluetooth is not ready
 - o Solid: Bluetooth is ready

- LAN/WiFi:
 - o No light: not connected to router
 - o Solid: the VitalsBridge is connected to the manikin's internal router or to an external router

Note: If you have just reconfigured your VitalsBridge to connect to Wi-Fi, the light will *not* turn on until you have first closed out of the VitalsBridge Connector software

Internal Battery

The VitalsBridge contains an internal, non-replaceable Lithium-Ion battery to allow for unplugged operation of the unit. When fully charged, this will allow for at least 1 hour of use (2 – 3 hours typical). To charge the battery, connect the external power supply. The power supply will charge a fully depleted battery in 6-12 hours. When the unit is switched on, the battery indicator on the top panel will flash when there is less than 10% of battery life remaining; if you need to continue using the VitalsBridge, connect the external power.

When plugged in and powered off, the VitalsBridge battery will be charged. When plugged in and powered on, the VitalsBridge battery will also be charged (at a slower rate).

Connect Patient Monitor Cables and Sensors to the VitalsBridge

This section will describe how to connect the cables and tubing between the VitalsBridge and the vital signs patient monitor. The cable and sensor kit provided with the VitalsBridge is intended to be preconfigured with the vital signs monitor brand and model you plan to use. If more than one vital signs monitor will be used, refer to www.vitalsbridge.com on how to purchase additional sensor and cable kits.

Begin the connection process by setting up your patient monitor so that it would function normally if all sensors were connected to a real patient. Refer to your patient monitor documentation and instruction manuals as needed.

- Connect all appropriate sensor cables to the patient monitor and ensure it is powered on.
- Check to see if the patient monitor has a working non-disposable SpO₂ probe. Test its functionality by placing it on your finger and verify that a reading on the patient monitor is shown.

Pulse Oximetry (SpO₂) (All Models)

 Video Link: <https://youtu.be/XF5gfQ2txwY>

Pulse oximetry, or SpO₂, is used to determine the oxygen saturation of a patient's blood. It also will provide a pulse measurement. SpO₂ simulation by the VitalsBridge uses special circuitry in a custom SpO₂ adapter, cable and sensor kit which simulates the SpO₂ probe according to the SpO₂ value set for your simulation. The custom SpO₂ adapter has labeled cable connections to both the VitalsBridge and the patient monitor.

Configuring SpO₂

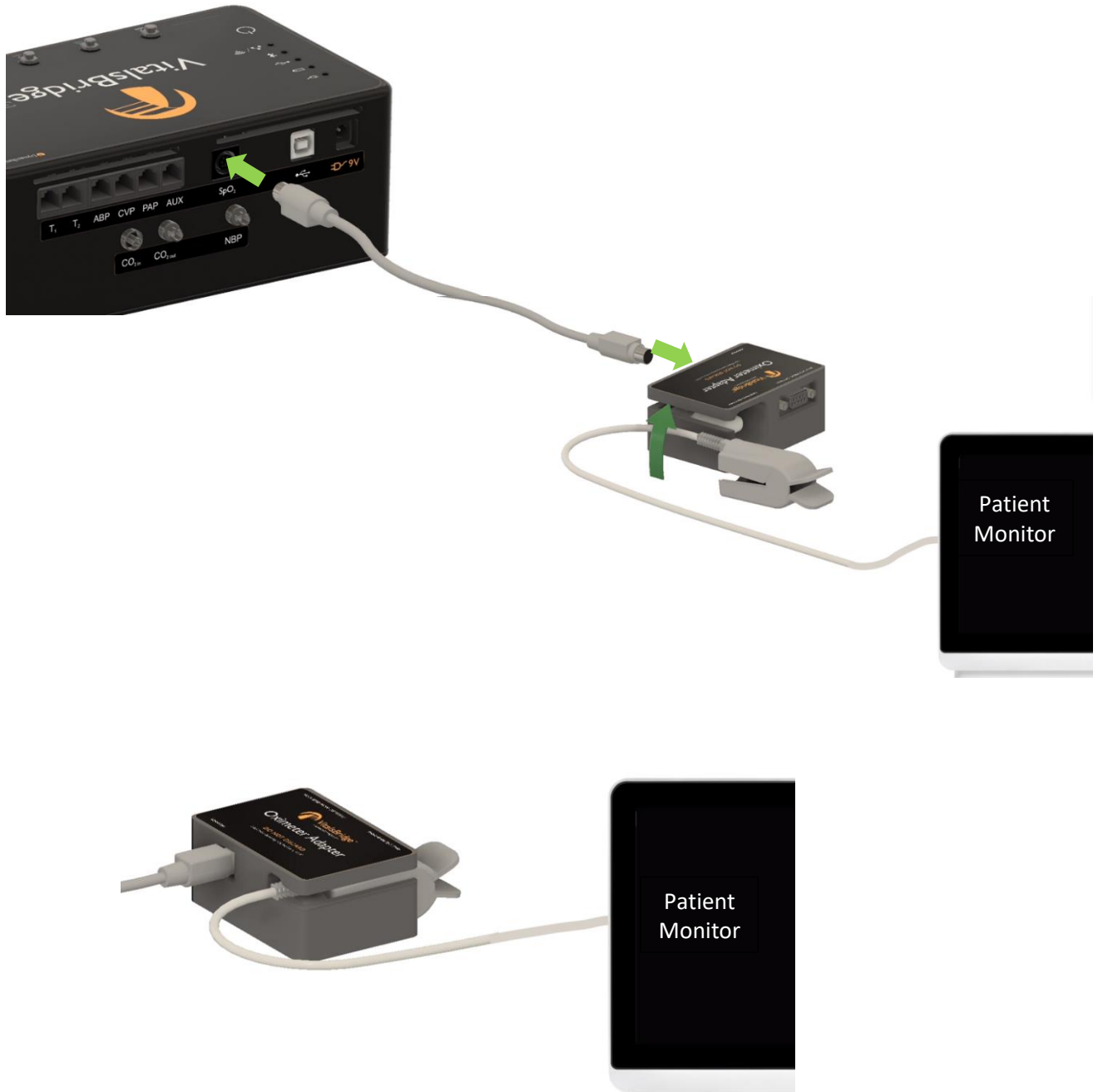
1. Locate the SpO₂ cable and probe connected to your monitor and the SpO₂ Adapter kit that came with the VitalsBridge.
2. In the SpO₂ Adapter kit, locate the grey cable with circular ends and seven pins.



3. Connect the grey cable to the labeled SpO₂ port on the VitalsBridge.
4. Connect the other end of the grey cable to the appropriate port on the Oximeter Adapter box.
5. Place the SpO₂ probe coming from the patient monitor in the Oximeter Adapter box. Below are written instructions and a diagram to help you complete this step.
 - a. Hold the probe parallel with the ground. The half of the probe with the cable attached should be on top. The half of the probe without a cable attached should be underneath, closest to the ground.

VitalsBridge Directions for Use

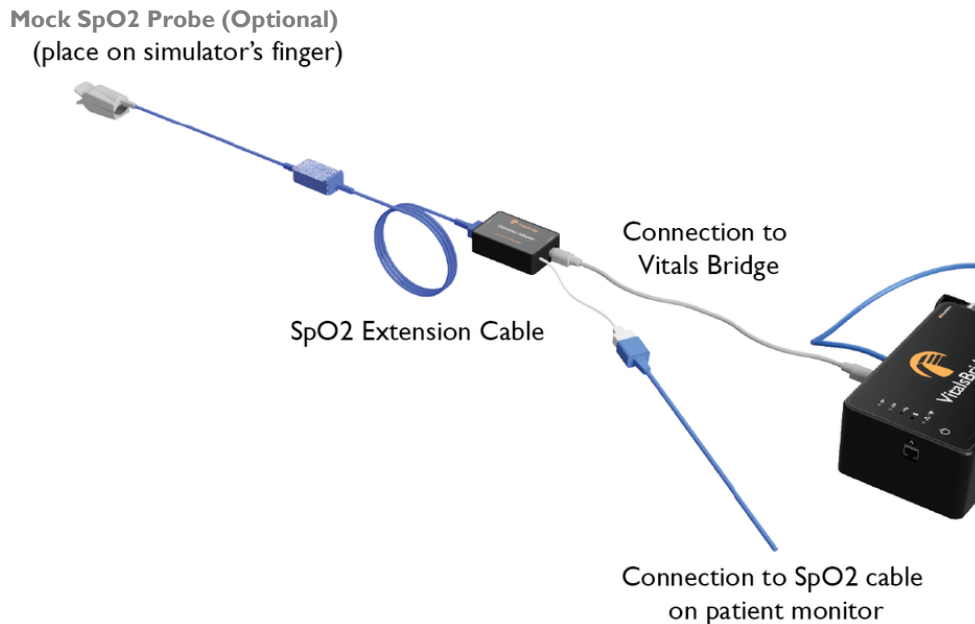
- b. Locate the slot on the Oximeter Adapter box intended for the SpO₂ probe. You should see a white post that simulates a patient finger inside the slot.
 - c. Slide the cable attached to the SpO₂ probe through the slot on the side of the Oximeter Adapter box.
 - d. Open the probe slightly and push the probe firmly into the slot onto the white "finger," then release.
6. If everything has been connected correctly, a reading should appear on the patient monitor after a few moments.



VitalsBridge Directions for Use

Mock SpO₂ Probe (Optional)

You will see a port on the Oximeter Adapter box for a mock SpO₂ probe. If the mock probe included in the kit is connected to the Oximeter Adapter box, a reading will not appear on your patient monitor unless the mock probe is placed on a patient simulator's finger. We do not recommend connecting the mock probe until you ensure that the connection is working properly and are ready to run a simulation with a patient simulator. For more information on the mock probe, see the section on "Increasing Realism."



Non-invasive Blood Pressure (NBP) (All Models)

Video Link: <https://youtu.be/7OznDRpDM3M>

The VitalsBridge simulates non-invasive blood pressure by mimicking the pulsing of an artery. The NBP tubing from the patient monitor is connected to the VitalsBridge, and when the patient monitor initiates an NBP reading, the VitalsBridge simulates an appropriate magnitude of pulsing.

Configuring NBP

1. Locate your NBP cable that goes with the patient monitor.
 - a. If a blood pressure cuff is still attached to the cable, carefully remove it.
2. Determine if your NBP cable needs configuring in order to connect to the VitalsBridge.
 - a. Compare the fitting at the end of your NBP cable to the NBP port on the VitalsBridge. If they will fit together, skip down to step 3. If not, continue to part 2.b.
 - b. Locate the NBP adapter bag. It contains tubing adapters and connectors for appropriate fitting(s) to connect the luer fitting on the VitalsBridge with the patient monitor's NBP tubing.

VitalsBridge Directions for Use



- i. Determine which connectors your cable will need to connect to the VitalsBridge NBP port. If the NBP tubing coming from your monitor has 2 connectors, a 2-tube to 1-tube adapter fitting has been provided.
- ii. Follow the instructions with the images below.



Select the appropriate tube and luer fittings



Affix the tube and luer fittings to each other to provide an ending that can be attached to the monitor NBP tubing

- c. Connect the appropriate adapters and connectors to the NBP cable from the patient monitor if necessary.
3. Connect the NBP cable to the labeled NBP port on the VitalsBridge.
4. Run a blood pressure cycle on the patient monitor. If everything has been connected correctly, a reading should appear on the monitor once the cycle is complete.

VitalsBridge Directions for Use

Temperature (All Models)

 Video Link: <https://youtu.be/jf2nhK77Z1k>

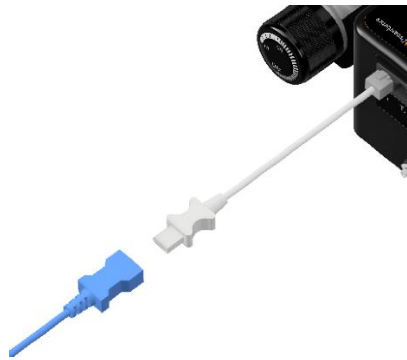
The VitalsBridge simulates the output of YSI 400-compatible temperature transducers.

Configuring ECG

1. Locate the temperature cables. They are short white cables that have an RJ-11 connector on one end and a transducer connector on the other.
2. Plug the RJ-11 connector end into the VitalsBridge.



3. Connect the transducer end to the temperature cable coming from the patient monitor.



4. Once connected and with the VitalsBridge powered on and initialized, a reading should appear on the patient monitor after a few moments.

VitalsBridge Directions for Use

Electrocardiogram (ECG) and Respiration (select configurations)

 Video Link: <https://youtu.be/TYTOszkZuC8>

The VitalsBridge has connections for up to 5 ECG leads (RA, RL, V, LL, and LA). In addition, a respiration by impedance signal is also produced by the VitalsBridge.

Configuring ECG

1. Using the ECG harness from the patient monitor, connect each lead to the VitalsBridge. Match the corresponding colors or labels on the leads to the snaps on the VitalsBridge.



2. Once connected and with the VitalsBridge powered on and initialized, a reading should appear on the patient monitor after a few moments.

VitalsBridge Directions for Use

Invasive Blood Pressure (IBP) (select configurations)

 Video Link: <https://youtu.be/LcbsGMnd5IQ>

The VitalsBridge simulates up to 3 different invasive blood pressure waveforms. These include arterial blood pressure (ABP), central venous pressure (CVP), pulmonary artery pressure (PAP) or pulmonary capillary wedge pressure (PCWP). It can also simulate intracranial pressure (ICP) and this vital sign is set up the same was as invasive blood pressures. Note: contact Dynasthetics or visit www.vitalsbridge.com for assistance with purchasing a VitalsBridge-compatible invasive blood pressure monitoring cable (i.e., the cable that connects from the patient monitor to the VitalsBridge RJ-11 cable).

1. Locate the invasive blood pressure adapter cables. They have an RJ-11 connector end and a transducer end, where the transducer style may vary depending on how the VitalsBridge was configured.
2. Connect the RJ-11 end of the cable to the VitalsBridge.



3. Connect the transducer end of the cable to the patient monitor's IBP or ICP cable.
4. If everything has been connected correctly, a reading should appear on the monitor after a few moments.

Notes: when using IBP, a connection to every waveform is not required for the VitalsBridge to function. Unused IBP ports on the VitalsBridge may be left unconnected. If your IBP adapter cable does not have the correct transducer style, please contact VitalsBridge Support (page 3).

Capnography (select configurations)

Overview

Capnography is the measurement of the concentration of a patient's exhaled CO₂. The VitalsBridge simulates the fraction of CO₂ exhaled from each breath by mixing appropriate amounts of air and CO₂. This mixture may be measured by the patient monitor using two different types of technologies: side-stream sampling and mainstream measurement. To use the VitalsBridge capnography function, ensure that your patient monitor supports capnography measurement.

A regulated source of compressed CO₂ is required for capnography. A portable CO₂ regulator is provided with the VitalsBridge. Alternatively, compressed CO₂ from another external source may be available at your facility (e.g., a wall source, a tank, etc.). Consult your facility's engineering department regarding external CO₂ sources and the appropriate regulators and adapters for proper setup and connection.

VitalsBridge Directions for Use

Using the Portable CO₂ Regulator

The portable CO₂ regulator uses 16g threaded CO₂ disposable cylinders. The regulator may be detached by moving the regulator out of its bracket on the side of the VitalsBridge. The regulator's tubing has a luer lock fitting that will connect into the VitalsBridge and regulator knob to control the flow of gas. The regulator should be turned to the **OFF** position when it is not connected to the VitalsBridge via the luer connection. Only turn the regulator on when a tight secure connection to the VitalsBridge has been verified.

⚠ Caution: The regulator's gauge should be positioned at the same level or above the attached CO₂ cylinder (i.e., keep cylinder level or upright). The cylinder is pressurized. Sudden release of pressure may cause injury. Turn regulator to **OFF** when not in use.

⚠ Warning: CO₂ cartridges may become extremely cold when discharging. Protect eyes and hands when installing and handling CO₂ cartridges.

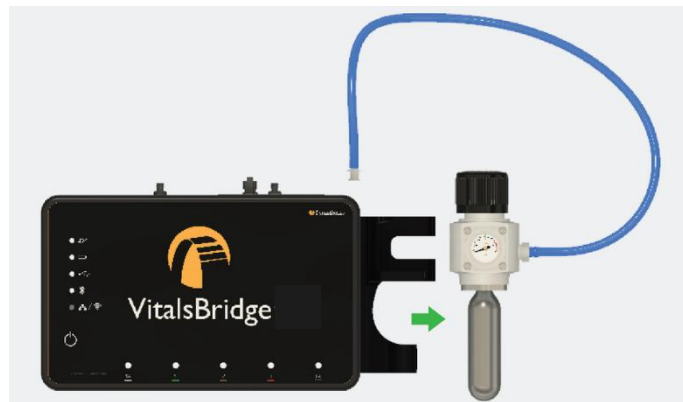
⚠ Warning: Mishandled CO₂ cartridges may become projectiles.

Install or Remove the CO₂ Cartridge

▶ Video Link Install: <https://youtu.be/3Fu4dNAQD-k>

▶ Video Link Uninstall: <https://tinyurl.com/VBCO2uninstall>

1. If replacing an empty cartridge, temporarily remove the regulator from its bracket on the VitalsBridge instrumentation and remove the empty cartridge from the regulator by turning it counterclockwise. *(If this is the first time installing a cartridge, the regulator should already be separated from its bracket and there should be no cartridge attached to it.)*

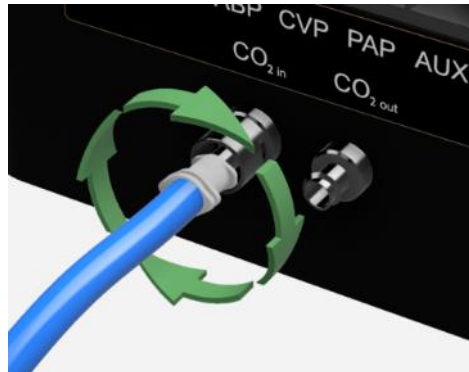


VitalsBridge Directions for Use

- Adjust the regulator knob to the "OFF" position by rotating it counterclockwise.



- Attach the blue tubing to the blue luer lock (CO_2 in) to the VitalsBridge. To ensure a secure connection between the regulator and the VitalsBridge, twist the luer fitting at least 180 degrees to the left before inserting the luer into the metal port on the VitalsBridge. Then twist to the right until it is tight.



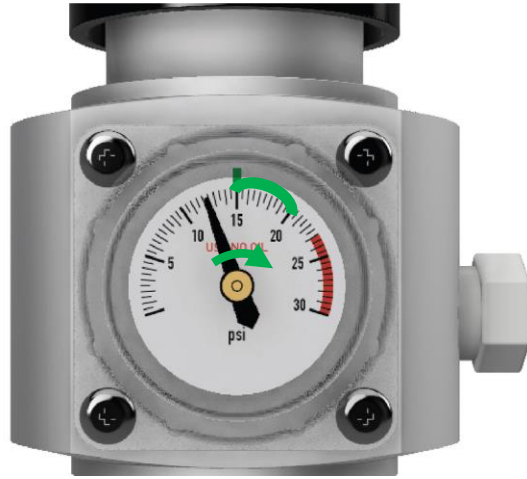
- Orient the VitalsBridge so the threaded connection on the regulator can be seen. Hold the regulator in one hand, align the cartridge under the housing, and quickly turn it clockwise into the regulator. Do not stop until tight. Do not over-tighten; the cartridge only needs to be hand tight. It is normal for a small burst of gas to leak out during cartridge installation.



- Replace the regulator back on the bracket that is attached to the VitalsBridge instrumentation.

VitalsBridge Directions for Use

6. SLOWLY turn the regulator knob clockwise until the indicator on the gauge reads between 15-20 PSI. Do not set the regulator to a reading higher than 20 PSI.



⚠ Caution: Ensure CO₂ has been fully released prior to disposing of the cartridge. This may be accomplished by: (i) turning the regulator to “OFF”, (ii) detaching the female luer fitting from the blue luer lock ring on the VitalsBridge, (iii) **slowly** turning the regulator knob clockwise (towards “HI”), and (iv) allowing the remaining compressed gas to expel in a controlled manner. The cartridge may be very cold. Point the outlet of the cartridge away from yourself and others. Wear eye protection. **Ensure that the knob is turned to the off position before a new cartridge is installed.**

⚠ Caution: When not in use turn the regulator to the off position and disconnect the regulator tubing from the VitalsBridge.

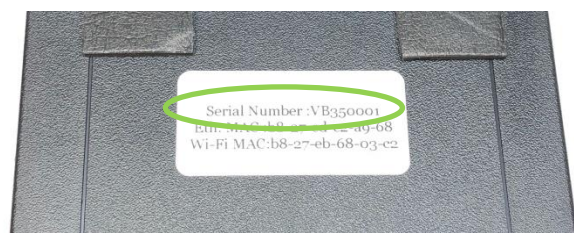
⚠ Caution: CO₂ cartridges may **NOT** be transported by air.

Capnography Configuration (Sidestream versus Mainstream CO₂)

There are two capnography options for the VitalsBridge:

- The **sidestream CO₂ only (serial # vb50xxxx)** VB4 does not support mainstream CO₂ patient monitoring; however, this version of VitalsBridge conserves CO₂ use and battery life (1 CO₂ cylinder will last 8+ hours).
- The **mainstream CO₂ (serial # vb55xxxx)** VB4 may be used for capnography monitoring of both mainstream and side-stream technologies. However, it requires more CO₂ use, increases mechanical noise slightly, and battery life may not be as long.

The serial # of the VitalsBridge is located on a label placed underneath the unit.



VitalsBridge Directions for Use

Because of the differences between side-stream and mainstream capnography, specific adapters are supplied with the VitalsBridge. It is important to understand which type of capnography technology is used and that the appropriate VitalsBridge 300 version is used to perform this measurement.

If you have additional questions about use of the VitalsBridge with sidestream and mainstream CO₂, please contact VitalsBridge Support, page 3).

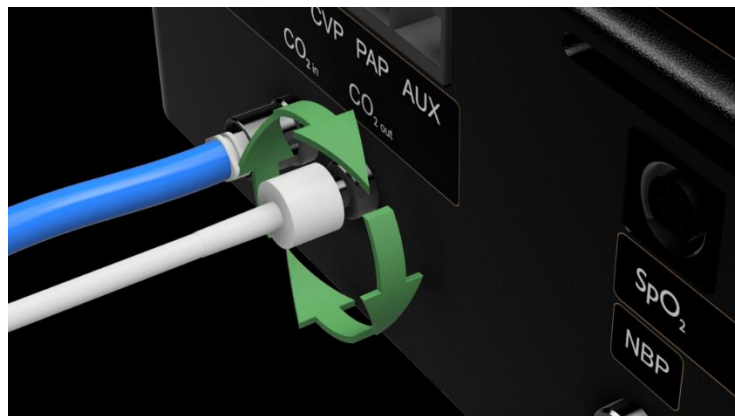
Sidestream Only VitalsBridge: Capnography Connection (Serial # vb50xxxx)

Video Link Install: <https://youtu.be/yxPfPMJwV9E>

One or more capnography sampling lines have been included with the VitalsBridge. A sampling line is a small clear plastic tube with a female luer fitting on one end and a fitting to connect to the patient monitor on the other end.

1. Connect the capnography line to your patient monitor.
2. Connect the female luer fitting on the other end of your capnography line to the luer fitting labeled "CO₂ out" on the VitalsBridge.

To side-stream CO₂
connection on vital signs
monitor. ←



3. Once the sampling line is connected, the patient monitor is powered on, the VitalsBridge is powered on and initialized, and the CO₂ regulator is on and set to the properly regulated pressure, a CO₂ waveform will appear on the capnograph portion of the patient monitor.

Mainstream Capable VitalsBridge: Capnography Connections (Serial # vb55xxxx)

A mainstream capable VitalsBridge may be used with both mainstream and sidestream CO₂ patient monitors.

Mainstream Capnography

A mainstream adapter has been supplied with the VitalsBridge 300. There are two types of mainstream patient monitor adapters: Capnostat and Nihon Kohden (shown below). Consult the patient monitor's documentation to determine which adapter should be used (or if you are unable to determine, please contact VitalsBridge Support, page 3).



Capnostat Adapter

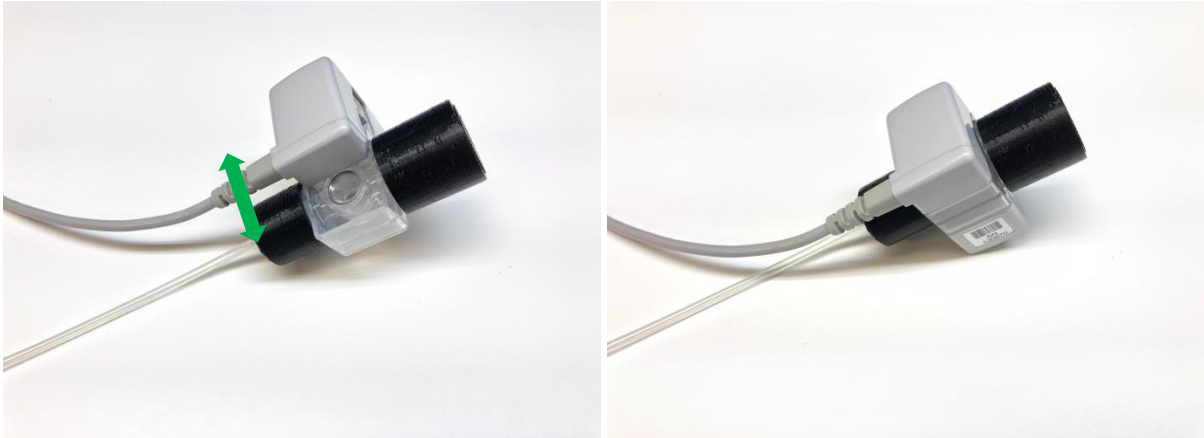


Nihon Kohden Adapter

VitalsBridge Directions for Use

1. Connect the adapter to the patient monitor cable.

If using a Capnostat adapter, slide the cable fitting around the clear plastic portion of the adapter.



If using a Nihon Kohden adapter, place the adapter so the two arrows are facing up. Then place the two monitor cables in the holes on either side of the adapter, arrows facing up. Each side should “click” when properly secured.



2. Connect the female luer on the mainstream adapter to the luer fitting labeled “CO₂ out” on the VitalsBridge.



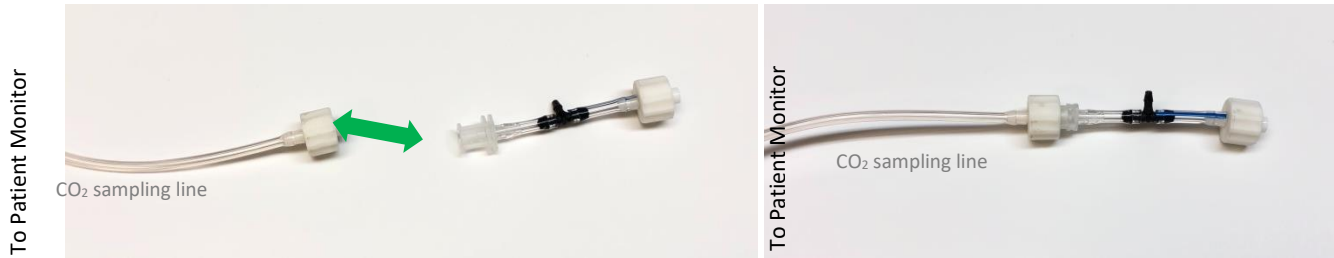
VitalsBridge Directions for Use

3. Once the patient monitor line is connected, the patient monitor is powered on, the VitalsBridge is powered on and initialized, and the CO₂ regulator is on and set to the properly regulated pressure, a CO₂ waveform will appear on the capnograph portion of the patient monitor.

Sidestream Capnography with a Mainstream Capable VitalsBridge

A mainstream capable VitalsBridge also works with sidestream capnography units. A special adapter fitting (shown below) is required and placed between the CO₂ sampling line and the VitalsBridge.

1. Connect the sampling line (the longer clear tube) to your patient monitor.
2. Connect the female luer on the capnography line with the male fitting on the second cable.



3. Connect the remaining female luer on the assembled cable to the luer fitting labeled “CO₂ out” on the VitalsBridge.



4. Once the sampling line is connected, the patient monitor is powered on, the VitalsBridge is powered on and initialized, and the CO₂ regulator is on and set to the properly regulated pressure, a CO₂ waveform will appear on the capnograph portion of the patient monitor.

Install and Run the VitalsBridge Connector Software

VitalsBridge Connector (Windows PC)

PC Requirements:

- Windows 8, 8.1, 10, and 11 operating system (see www.vitalsbridge.com/downloads/)
- Ethernet (LAN), wireless network (WLAN), Bluetooth or USB/serial (RS-232) communication capability

Installation

Software Download Link:

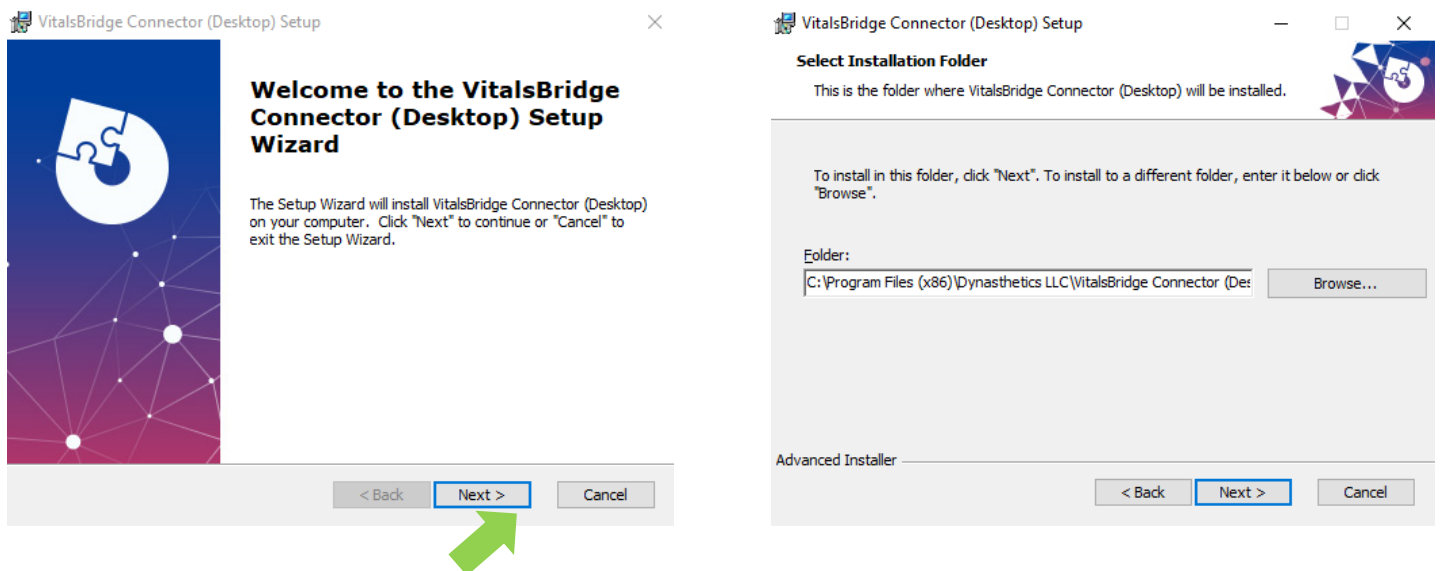
- www.vitalsbridge.com/downloads/

Download the appropriate VitalsBridge Connector installation software from vitalsbridge.com/downloads/. If necessary, copy the software to the computer on which it will be installed.

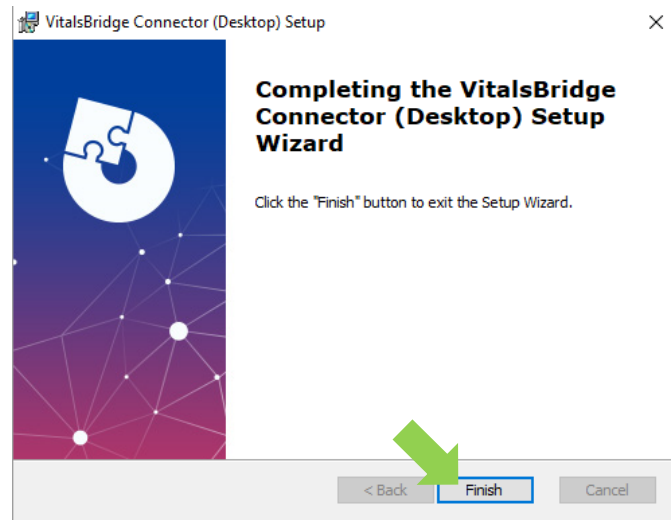
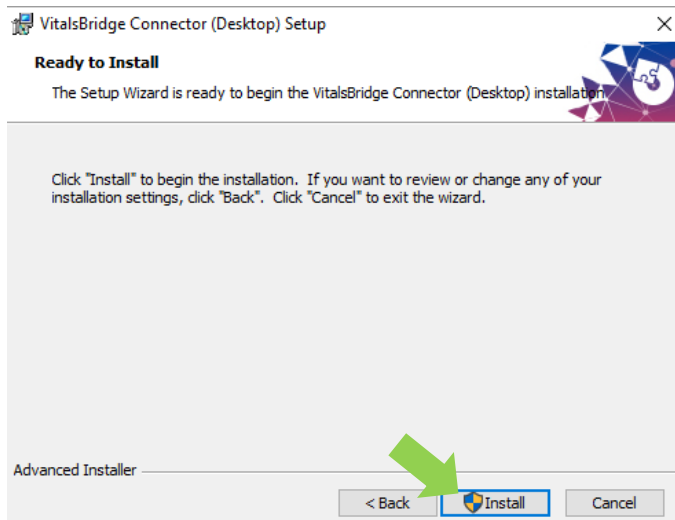
Note: Choose the appropriate VitalsBridge installation software carefully. There may be specific installation software that is compatible with a particular version of a patient simulator (e.g., a particular version of Laerdal's LLEAP) software.

Note: If it is intended for the VitalsBridge to be used in conjunction with Laerdal LLEAP patient simulator software, download the VitalsBridge connector software to the computer where Laerdal's LLEAP is installed. Otherwise simply download the connector software to the computer the VitalsBridge will be controlled from.


Once downloaded, navigate to the installation software file and open it. Follow the on-screen installation instructions. Upon successful installation, a VitalsBridge icon will be created on the PC's desktop.

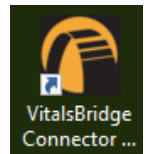


VitalsBridge Directions for Use



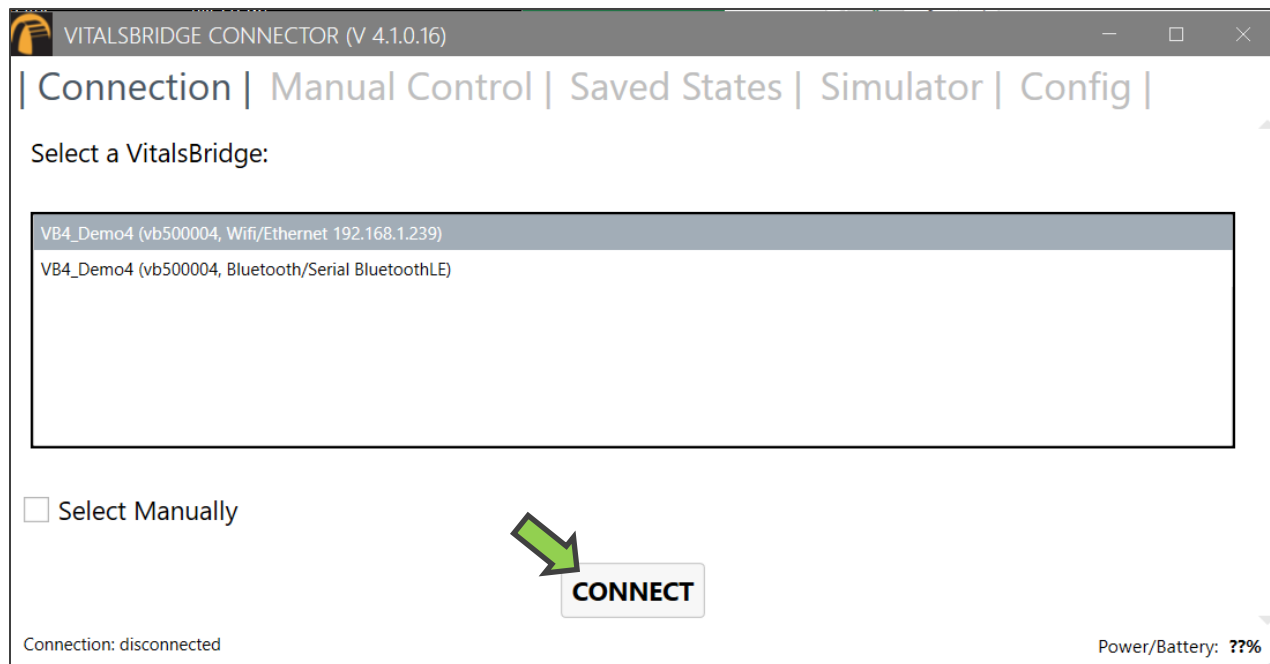
Run the VitalsBridge Connector Software

If using a PC, double click on the VitalsBridge Connector icon, labeled VitalsBridge Connector, located on the computer's desktop. Alternatively, the software may be located by searching for “VitalsBridge” using the Windows search function (i.e., +S “VitalsBridge”).

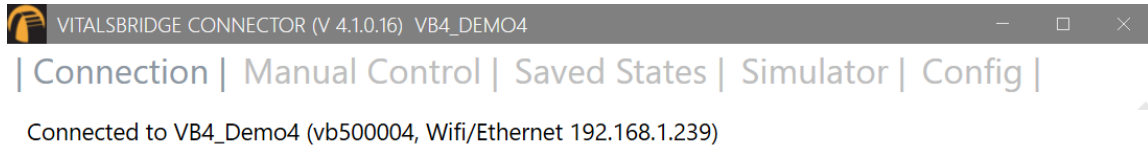


Connect the VitalsBridge to the Connector Software

Once the Connector Application is running, any available VitalsBridge units will appear in the Connection tab (any units connected via Bluetooth LE, Serial, or Ethernet/Wi-Fi). Select the correct VitalsBridge unit and press CONNECT. **Note:** If the VitalsBridge is being setup for the first time, additional configuration is needed to communicate with the VitalsBridge. See page **Error! Bookmark not defined.**




VitalsBridge Directions for Use

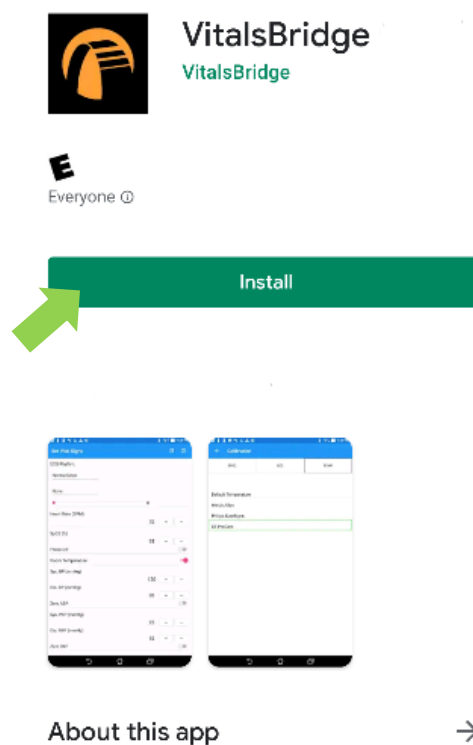


VitalsBridge Connector App (Android)


The VitalsBridge Connector Android App is available for download on the Google Play Store. Using an Android mobile device, navigate to:

- <https://play.google.com/store/apps/details?id=com.dynasthetics.vitalsbridge>

Alternatively, open the Google Play Store App  on the Android mobile device, and search for 'VitalsBridge'. Select 'Install'.



VitalsBridge Connector App (iOS)

The VitalsBridge Connector iOS App is available for download on the Apple App Store. Using an iOS mobile device, open the App Store App  and search for 'VitalsBridge'. Select 'Install'.

Establish Communication with the VitalsBridge

Overview:

The communication options between the PC and VitalsBridge are:

1. USB (RS-232)
2. Bluetooth LE
3. Ethernet
4. Wi-Fi*

The communication options between the Android mobile device and VitalsBridge are:

1. Bluetooth
2. Wi-Fi*

Please select the connection method that best suits your needs.

* The Wi-Fi connection option is not available during initial set-up. Please select one of the other connection methods for the first connection.

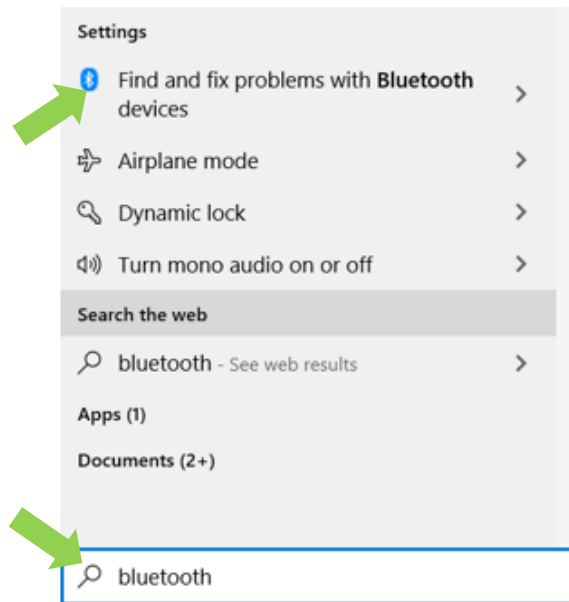
Note: Only *one* connection is needed at any given time.

Establishing the VitalsBridge – PC Connection

Bluetooth LE

The VitalsBridge communicates to the VitalsBridge Connector software using Bluetooth LE. This Bluetooth technology does not require pairing the VitalsBridge to the PC.

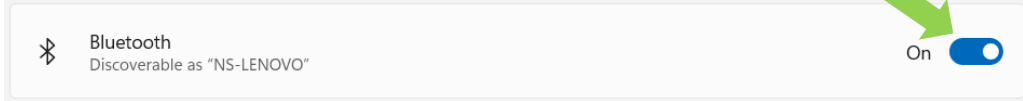
1. Open the Bluetooth Settings (⌘+S “Bluetooth”)



VitalsBridge Directions for Use

2. Ensure that Bluetooth is set to On.

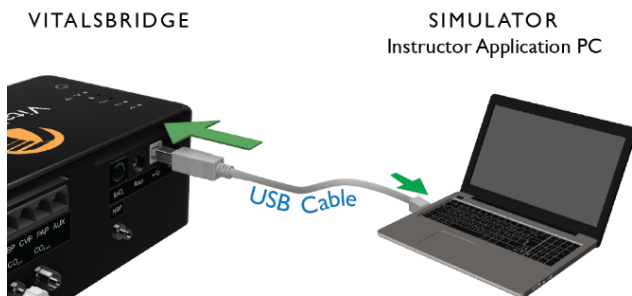
Bluetooth & devices > Devices



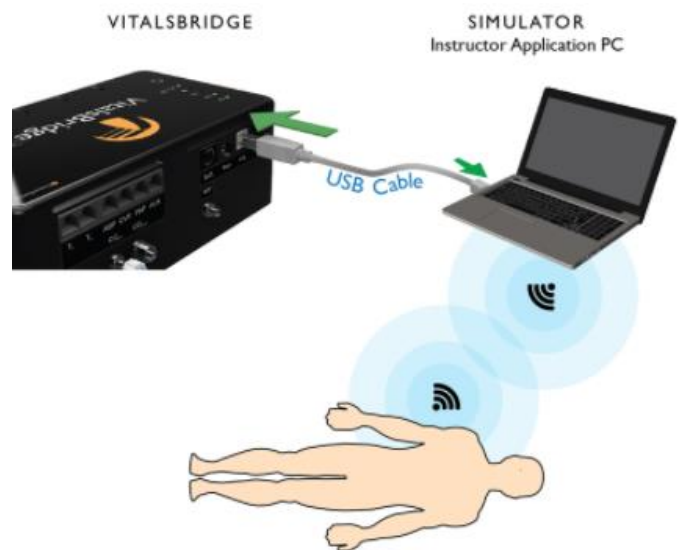
USB cable

 Video Link: <https://youtu.be/Kk3TU3nHpd0>

1. With the supplied USB cable, connect the VitalsBridge to the Windows PC.



Standardized Patient Setup



Running the VitalsBridge using a Serial Cable
With a patient simulator

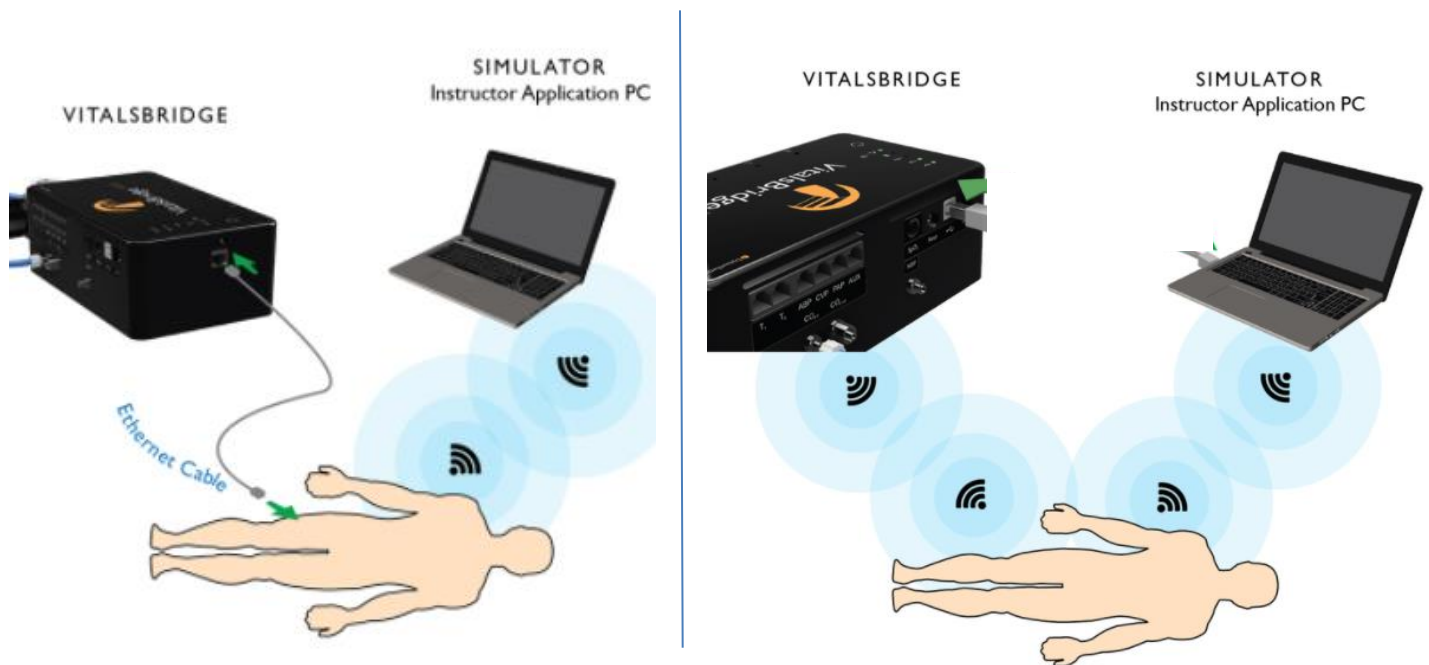
2. Windows will automatically install the appropriate drivers for RS-232 communication over USB. Please wait approximately two minutes for the appropriate drivers to be installed. Alternatively, consider restarting the computer prior to launching the VitalsBridge Connector application.
3. Launch the VitalsBridge Connector software.
4. Occasionally the drivers need to be installed manually. Please contact VitalsBridge Support (see page 3) if there are difficulties with connecting over USB.

VitalsBridge Directions for Use

Ethernet/Wi-Fi

The VitalsBridge may be connected to a router by an Ethernet cable or by Wi-Fi (2.4 GHz 8.02.11b/g/n). If applicable, the VitalsBridge Connector software is intended to run on a PC that is on the same network as the VitalsBridge and patient simulator. The VitalsBridge requires a router that assigns IP addresses using DHCP. If a reserved IP address is needed, consult your router documentation or network administrator. The VitalsBridge MAC addresses for Ethernet and Wi-Fi are printed on a label, located on the bottom of the VitalsBridge.

For details about connecting via these methods, see below.



Ethernet

Video Link: <https://youtu.be/gfPWRhEgsxM>

When connecting the VitalsBridge to a patient simulator using an Ethernet cable, ensure the cable is functional and is securely connected between the Ethernet ports of the VitalsBridge and the manikin's ethernet port.

It is also possible for the VitalsBridge to be directly connected to a Windows PC that controls a patient simulator with an Ethernet cable. The VitalsBridge is assigned one of the link-local addresses in the range 169.254.1.1 - 169.254.254.254. Some additional network configurations may be necessary.

Wi-Fi

Wi-Fi communication for the VitalsBridge is possible *only* after it has been configured using the VitalsBridge Connector software. Wi-Fi configuration is completed with a Bluetooth or USB connection to the VitalsBridge. Wi-Fi communication *cannot* be used during the initial set-up.

SSID and Password

Video Link: <https://tinyurl.com/VBWiFiinstruction>

VitalsBridge Directions for Use

Note: Before completing the process outlined below, you *must* have already 1) downloaded the VitalsBridge Connector Software, 2) successfully established a connection between your PC and the VitalsBridge **via USB or Bluetooth**, and 3) connected the VitalsBridge to the connector software.

The Wi-Fi SSID and Password may be set for the VitalsBridge in the Configuration tab of the VitalsBridge Connector Software. This will allow for a connection via Wi-Fi.

Wi-Fi may be set up to connect via an access point (i.e., a router within a manikin) or via a typical wireless router.

1. Check the “Update” checkbox adjacent to the Wi-Fi field.
2. Enter the name of the SSID and password of the wireless router or access point (note that both the SSID and password fields are case-sensitive). Be sure to set the appropriate country field, then UPDATE.

VitalsBridge Name: **MyVitalsBridge** Update

Wifi: ssid: **UnknownSSID** pass: ********* Update

Wifi SSID:

Wifi Password:

Application Access through Firewalls and Network Ports

Discovery of the VitalsBridge instrumentation uses the UDP network protocol on port 14998, while TCP/IP communication occurs over port 14997. Ensure that the firewalls on both the router and the PC allow access to these ports. For example, when running the VitalsBridge Connector the first time on a Windows PC, please ensure you allow application access through the Windows Firewall on both the public and private profiles.

How to Use the VitalsBridge Connector Software

Before beginning this segment make sure the following have been completed:

1. The VitalsBridge has been connected properly to the patient monitor.
2. The VitalsBridge has been connected properly to the device that will be used to control it.
3. The VitalsBridge Connector Software has been downloaded and installed on the PC that will be used to control the VitalsBridge.

Basic steps to run the VitalsBridge:

1. Power on the VitalsBridge.
2. Run the VitalsBridge Connector Software.

VitalsBridge Directions for Use

3. Connect the VitalsBridge to the connector software or app.
4. Manually control the desired vital signs via the connector software or app.

Manual Adjustment of Vital Signs

Once connected to the VitalsBridge, vital signs can be manually controlled. Touch the + / - to increase or decrease the value. One may also hold the + / - value to make rapid changes or type the desired value into the number box. Use the check boxes to completely turn off vital signs, set the temperature probe to room temperature, or to zero invasive blood pressures.

The screenshot shows the 'Manual Control' tab of the VitalsBridge Connector software. The interface includes a navigation bar with 'Connection', 'Manual Control', 'Saved States', 'Simulator', and 'Config'. The 'Manual Control' section is divided into two columns of controls. The left column contains: ECG Rhythm (NormalSinus), ECG ExtraSystole (None), Heart Rate (BPM) (80), Temp. 1 (deg. C) (37), Sys. BP (mmHg) (120), Sys. PAP (mmHg) (25), ICP (mmHg) (11), and RR (BrPM) (12). The right column contains: a DEFIB button, Force ECG OFF checkbox, ExtraSys. Freq. (%) slider, SpO2 (%) (95), Force SpO2 OFF checkbox, Temp. 2 (deg. C) (37), Force Temp Off checkbox, Dia. BP (mmHg) (80), Zero ABP checkbox, Force NIBP Off checkbox, Dia. PAP (mmHg) (15), Zero PAP checkbox, PCWP checkbox, CVP (mmHg) (2), Zero CVP checkbox, ICP Wave (Normal), Zero ICP checkbox, etCO2 (mmHg) (35), Force CO2 Off checkbox, CO2 Shape (Normal), and Check All checkbox. A 'SAVE' button is located at the bottom left of the control area.

Note: For configurations that support fewer vital signs or unsupported parameters, these parameters will not be shown, or will be disabled.

Note: The 'Force SpO2 OFF' option will not result in the plethysmograph waveform to disappear or 'flat line' on the patient monitor. Instead, the signal may wander in a manner that allows the patient monitor to identify that the SpO₂ probe is off.

Pulmonary Capillary Wedge Pressure Simulation (select configurations)

Simulation of wedging a small pulmonary artery by inflating a balloon to measure the pulmonary capillary wedge pressure (PCWP) is accomplished by checking the PCWP checkbox in the Manual or Simulation tab of the VitalsBridge connector. This will send a PCWP waveform from the VitalsBridge to the vital signs monitor using the PAP connection. Adjust the value of the PCWP value by using the + - on the VitalsBridge. If a patient simulator is generating the PCWP waveform, click the checkbox on the Simulator tab to change the waveform from PAP.

VitalsBridge Directions for Use

Saved States

The VB4 is able to save and recall sets of vital signs. To save a state:

1. Navigate to the Manual tab
2. Name the Saved State and SAVE.

VITALSBRIDGE CONNECTOR (V 4.1.0.16) MYVITALSBRIDGE

| Connection | Manual Control | **Saved States** | Simulator | Config |

ECG Rhythm: NormalSinus DEFIB Force ECG OFF

ECG ExtraSystole: None ExtraSys. Freq. (%):

Heart Rate (BPM): 91 + - SpO2 (%): 76 + - Force SpO2 OFF R:R 0.0 G 173,173 M 50

Temp. 1 (deg. C): 37.3 + - Temp. 2 (deg. C): 37 + - Force Temp Off

Sys. BP (mmHg): 121 + - Dia. BP (mmHg): 85 + - Zero ABP Force NIBP Off

Sys. PAP (mmHg): 25 + - Dia. PAP (mmHg): 15 + - Zero PAP

ICP (mmHg): 11 + - CVP (mmHg): 2 + - PCWP

RR (BrPM): 12 + - ICP Wave: Normal Zero ICP

Mv Saved State Zero CVP

etCO2 (mmHg): 35 + - Force CO2 Off

CO2 Shape: Normal Check All

To recall a saved state:

1. Navigate to the Saved States tab and SELECT SAVED STATE.

VITALSBRIDGE CONNECTOR (V 4.1.0.16) MYVITALSBRIDGE

| Connection | Manual Control | **Saved States** | Simulator | Config |

Saved State: (none)

ECG Rhythm: NormalSinus

VitalsBridge Directions for Use

2. Select the state you wish to use and add a time to transition from the current state (enter '0' for immediate changes), then SELECT.

VITALSBRIDGE CONNECTOR (V 4.1.0.16) MYVITALSBRIDGE

| Connection | Manual Control | Saved States | Simulator |

Saved State: hr106 (pending)

ECG Rhythm: NormalSinus (overridden on)

Heart Rate (beats/min):	106	
SpO2 (%):	95	
Resp. Rate (breaths/min)	12	
End Tidal CO2 (mmHg)	35	(overridden on)
Temp. 1 (deg C / deg F):	37.0 (98.6)	(overridden on)
Temp. 2 (deg C / deg F):	37.0 (98.6)	(overridden on)
NIBP/ABP (mmHg):	120/80 (93)	
CVP (mmHg):	2	
PAP (mmHg):	25/15 (18)	
PCWP (mmHg):	12	
ICP (mmHg):	11	

Choose a state:

- This is a new state
- hr137
- hr106
- hr85
- baseline

MOVE UP

MOVE DOWN

REMOVE

SELECT

CANCEL

Transition time (secs): 90

Calibration and Zeroing

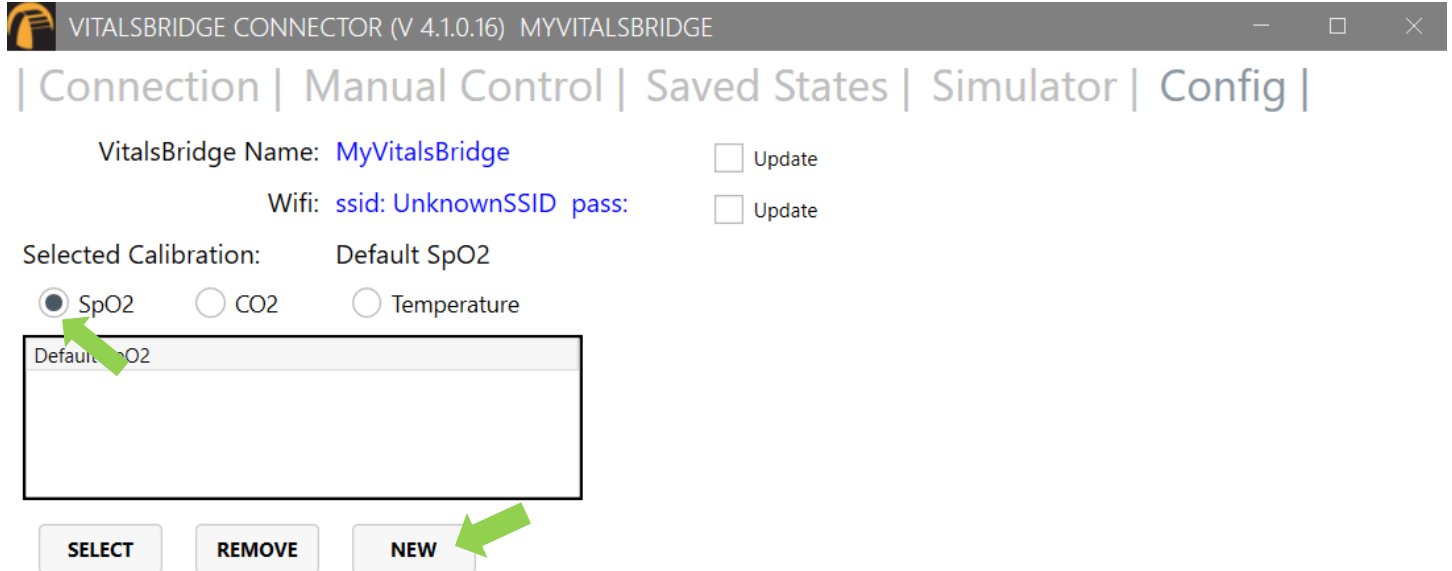
It may be necessary to calibrate the vital signs to your specific monitor. For instructions on how to complete the calibrations from the VitalsBridge Connector Software, see below.

SpO₂ Calibration

The VitalsBridge is pre-calibrated with factory settings for a Nellcor standard probe. SpO₂ calibrations are stored on the VitalsBridge. When the set SpO₂ value significantly deviates from the value shown on the vitals sign monitor, then it is recommended to perform a new calibration. First, ensure the SpO₂ probe is placed properly in the SpO₂ adapter and the VitalsBridge is powered on and connected via the VitalsBridge Connector. It is also recommended that the “mock” SpO₂ probe is disconnected from the adapter box prior to starting a new calibration.

VitalsBridge Directions for Use

Under the Config tab, Choose SpO₂ under “Selected Calibration” and press the NEW button.



VitalsBridge Name: MyVitalsBridge Update

Wifi: ssid: UnknownSSID pass: Update

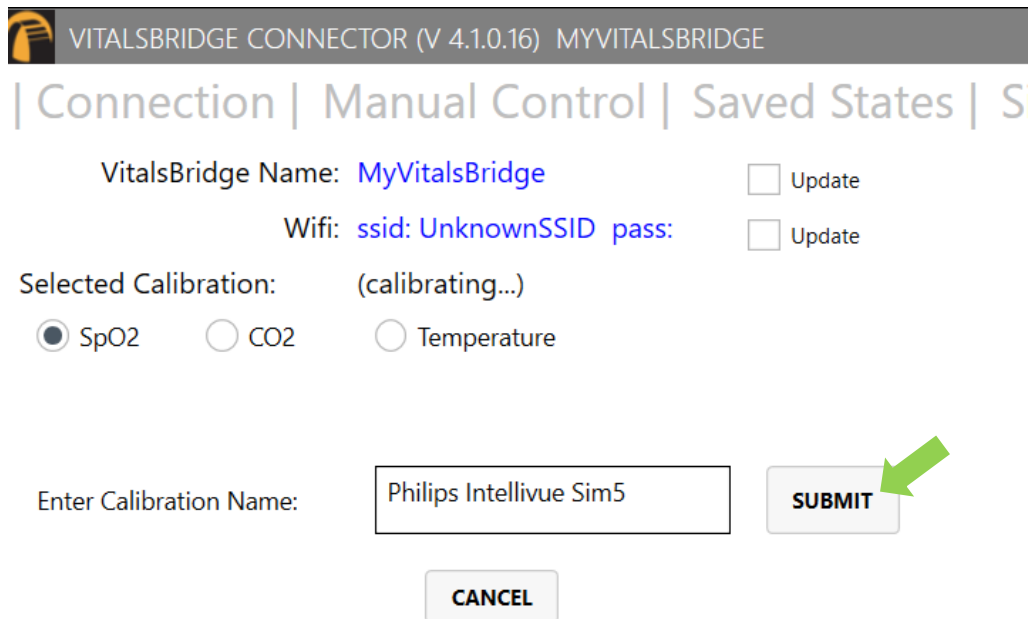
Selected Calibration: Default SpO2

SpO2 CO2 Temperature

Default SpO2

SELECT REMOVE NEW

Choose a name for the calibration and SUBMIT.



VitalsBridge Name: MyVitalsBridge Update

Wifi: ssid: UnknownSSID pass: Update

Selected Calibration: (calibrating...)

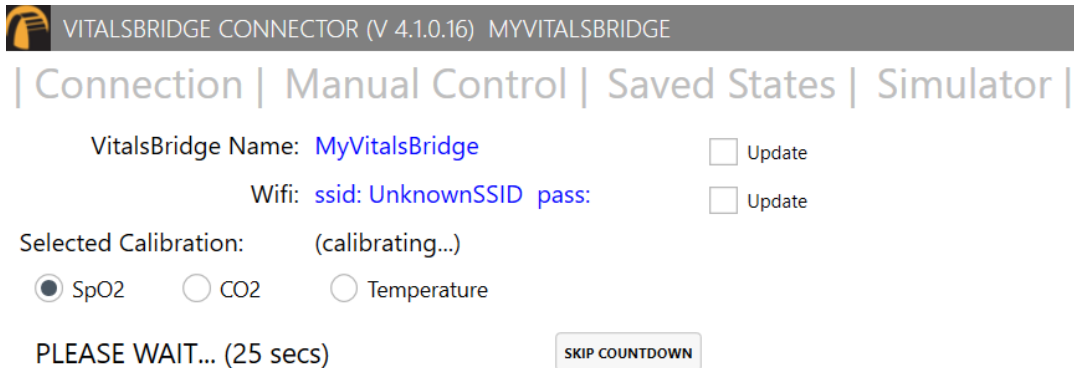
SpO2 CO2 Temperature

Enter Calibration Name: Philips Intellivue Sim5 SUBMIT

CANCEL

VitalsBridge Directions for Use

The user interface will instruct you to wait for a period of time. This is necessary to allow the SpO₂ reading to stabilize on the vital signs monitor before entering the value, as some vital signs monitors filter and average the SpO₂ value, causing delays.



VITALSBRIDGE CONNECTOR (V 4.1.0.16) MYVITALSBRIDGE

| Connection | Manual Control | Saved States | Simulator |

VitalsBridge Name: [MyVitalsBridge](#) Update

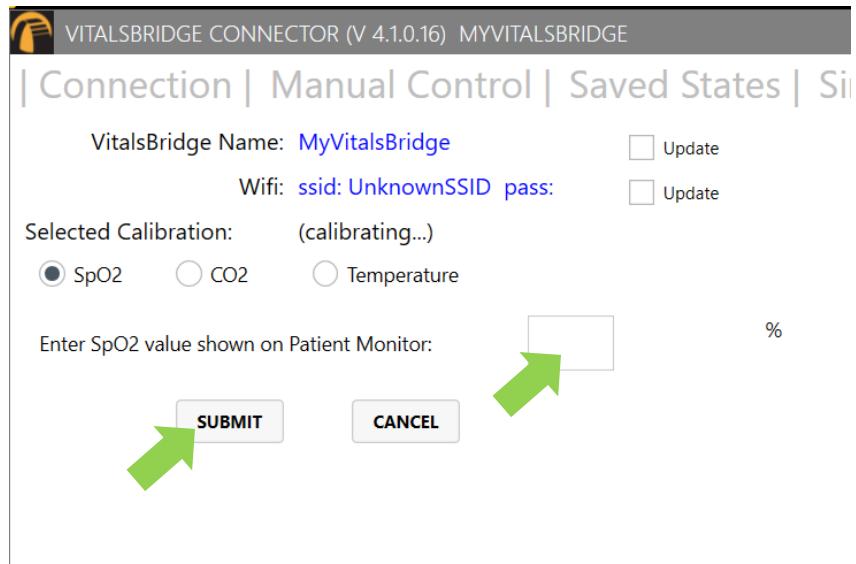
Wifi: [ssid: UnknownSSID](#) [pass:](#) Update

Selected Calibration: (calibrating...)

SpO₂ CO₂ Temperature

PLEASE WAIT... (25 secs)

Enter the value shown on the patient monitor and SUBMIT. Verify that this reading is from the real vital signs monitor and not a reading from a patient simulator.



VITALSBRIDGE CONNECTOR (V 4.1.0.16) MYVITALSBRIDGE

| Connection | Manual Control | Saved States | Simulator |

VitalsBridge Name: [MyVitalsBridge](#) Update

Wifi: [ssid: UnknownSSID](#) [pass:](#) Update

Selected Calibration: (calibrating...)

SpO₂ CO₂ Temperature

Enter SpO₂ value shown on Patient Monitor: %

VitalsBridge Directions for Use

The process of entering in a SpO₂ value is repeated until enough points are found for an accurate calibration reading. Once enough calibration points are measured, the calibration data is automatically saved and selected.

VITALSBRIDGE CONNECTOR (V 4.1.0.16) MYVITALSBRIDGE

| Connection | Manual Control | Saved State

VitalsBridge Name: **MyVitalsBridge** Update

Wifi: **ssid: UnknownSSID pass:** Update

Selected Calibration: **Philips Intellivue Sim5**

SpO2 CO2 Temperature

Default SpO2
Philips Intellivue Sim5

SELECT **REMOVE** **NEW**

Unused calibrations may be removed by highlighting the desired calibration to remove and selecting REMOVE.

Temperature Calibration Selection

The default temperature calibration selection is appropriate for most critical care patient monitors. Select the Default Temperature setting in the Configuration tab of the VitalsBridge Connector.

VITALSBRIDGE CONNECTOR (V 3.3.1.35) MYVITALSBRIDGE

| Connection | Manual | Simulator | Configuration |

VitalsBridge Name: **MyVitalsBridge** Update

Wifi: **ssid: parsley pass: ******* Update

Selected Calibration: **Default Temperature**

SpO2 CO2 Temperature

Default Temperature
Welch Allyn
Philips SureSigns
GE ProCare

SELECT

VitalsBridge Directions for Use

“Spot-Check” Temperature Readings

There are a few non-custom calibrations provided for vital signs monitors that have hand-held “Spot Check” temperature probes.

1. Choose the appropriate patient monitor with a hand-held “Spot-Check” temperature probe from the list of temperature calibrations in the VitalsBridge Connector’s Calibration Tab.
2. Place the temperature probe on the spot-check monitor in the probe’s cradle.
3. Navigate to the “Manual” tab on the VitalsBridge Connector software.
4. Ensure the “Force Temp Off” checkbox is selected.
5. Take the temperature probe on the spot-check monitor from its cradle, followed by unchecking the “Force Temp Off” checkbox.
6. Wait for the monitor to take a reading.

CO₂ Calibration (select configurations)

Calibration may be needed if the end-tidal CO₂ reading on the patient vital signs monitor does not properly match the CO₂ waveform on the Instructor Application. CO₂ calibration is performed in a similar manner as SpO₂ (page 33).

1. Ensure CO₂ regulator is attached to the VitalsBridge, the patient monitor capnography measurement system is active, the sampling line is attached, and the VitalsBridge is running (pages 18 - 20).
2. In the “Configuration” tab of the VitalsBridge Connector software, select the CO₂ radio button and press NEW.
3. Enter the name of the custom calibration.
4. As per the instructions on the user interface, wait a few seconds and enter the end-tidal CO₂ value (mmHg) shown on the patient monitor.
5. Repeat step 3 for all necessary calibration points as prompted.

Invasive Blood Pressure Zeroing (select configurations)

IBP may be zeroed by setting the blood pressure waveform to “Flat Line” in the software used to control your patient simulator. Refer to your patient monitor's documentation for procedures of zeroing the pressures within the monitor's user interface. Once the pressures are zeroed on the monitor, deselect and apply the “Flat Line” setting in the Instructor Application to allow the waveforms to reappear. If the blood pressure readings differ significantly from the values set in the instructor application, then attempt to re-zero.

1. This step varies depending on which method you are using to manipulate your vital signs.
 - a. When using the VitalsBridge in conjunction with a patient simulator: In the simulator’s Instructor Application software, locate where the waveform may be “zeroed” or “flatlined” (see patient simulator documentation for further information).
 - b. Using the VitalsBridge Connector App: In the Manual tab of the VitalsBridge connector, select the “Zero” checkbox of the invasive blood pressure you wish to zero.

VitalsBridge Directions for Use

VITALSBRIDGE CONNECTOR (V 3.3.1.35) MYVITALSBRIDGE

| Connection | Manual | Simulator | Configuration |

ECG Rhythm: NormalSinus Force ECG OFF

ECG ExtraSystole: None

ExtraSys. Freq. (%):

Heart Rate (BPM): 70 + - SpO2 (%): 95 + - Force SpO2 OFF

Temp. 1 (deg. C): Temp. 2 (deg. C): Force Temp Off

Sys. BP (mmHg): 120 + - Dia. BP (mmHg): 80 + - Force NIBP Off

Sys. PAP (mmHg): 25 + - Dia. PAP (mmHg): 5 + - Zero ABP Zero PAP

A green arrow points to the "Zero ABP" checkbox.

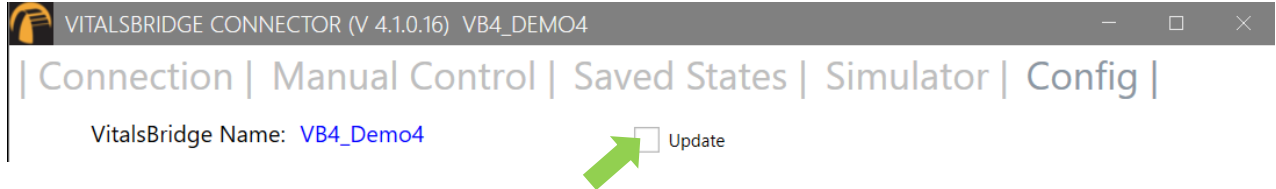
2. Use the patient monitor's user interface and activate the zero function for the corresponding invasive pressure. Consult your patient monitor's user manual on instructions for how to zero an invasive blood pressure. Verify that the zero has succeeded and is showing a value of 0 on the patient monitor.
3. Uncheck the checkbox in the "Manual" tab from Step 1 or disable the zero on the patient simulator's instructor software.

VitalsBridge Directions for Use

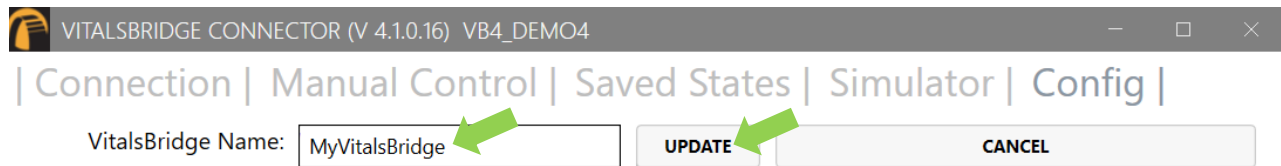
Other Configuration Settings and Features

Setting the VitalsBridge Name

1. Navigate to the “Configuration” tab of the VitalsBridge.
2. Check the “Update” checkbox adjacent to the VitalsBridge Name.



3. Enter the new name of the VitalsBridge and press UPDATE



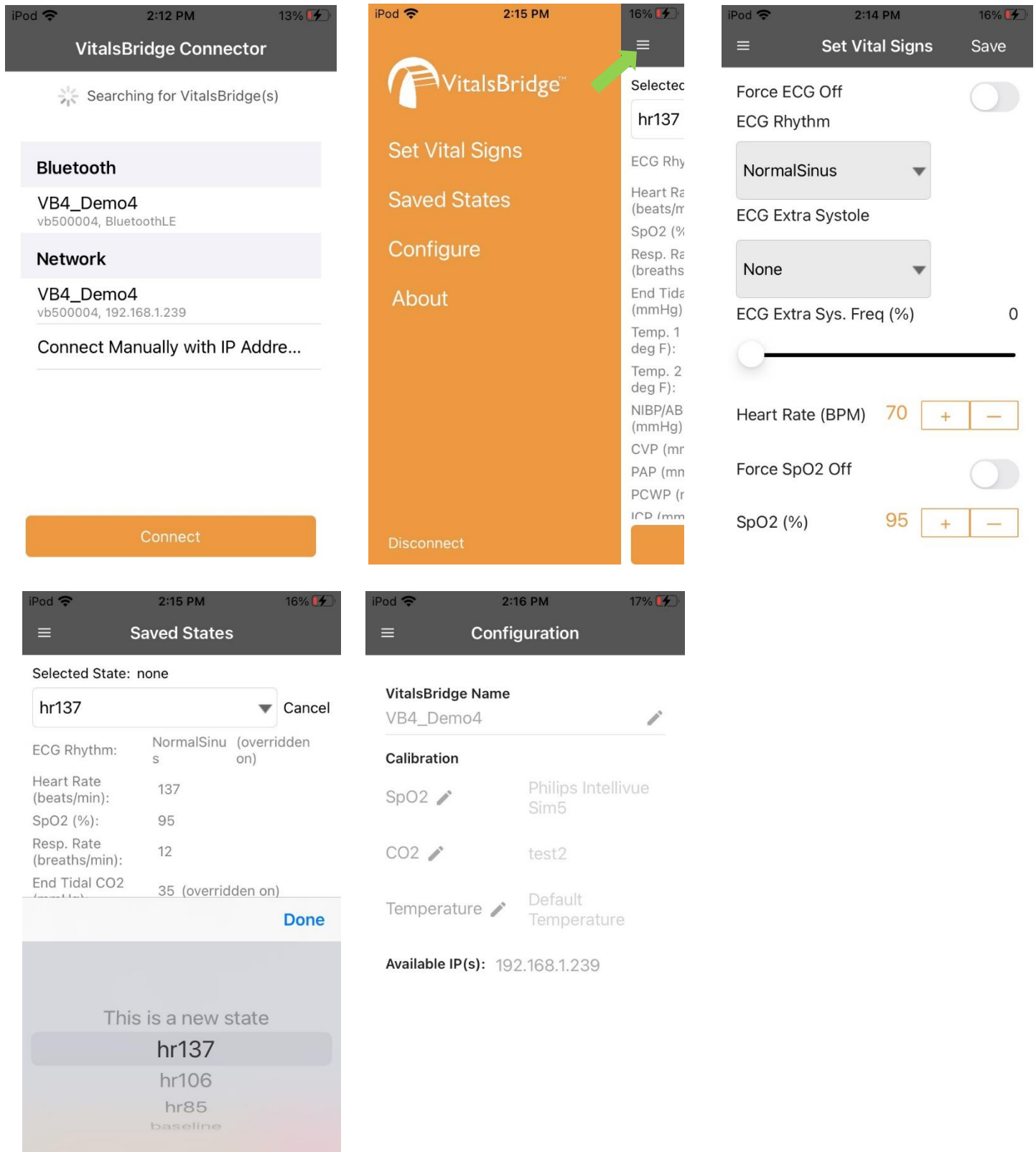
4. The VitalsBridge will be updated with the new name.



VitalsBridge Directions for Use

Use the VitalsBridge with a Mobile Device

The VitalsBridge App can be used to connect to a VitalsBridge device. Once connected, use the horizontal 3 bar UI element to use the various VitalsBridge functions (setting vital signs, selecting saved states, and configure/calibration).



VitalsBridge Directions for Use

Use the VitalsBridge with a Patient Simulator

The VitalsBridge Connector Software offers direct integration with Laerdal Patient Simulators that are running LLEAP. Other patient simulator brands and models may also be compatible with the VitalsBridge. The VitalsBridge can also be run with low-fidelity manikins and standardized patients.

Standardized Patients and Low-Fidelity Patient Simulators

Basic steps to run the VitalsBridge with a standardized patient or low-fidelity manikin:

1. Power on the computer.
2. Power on the VitalsBridge.
3. Run the VitalsBridge Connector Software.
4. Connect the VitalsBridge to the connector software.
5. Control the desired vitals via the VitalsBridge Connector software.

Laerdal High-Fidelity Patient Simulators

Before beginning this segment with a Laerdal manikin that is running LLEAP, make sure the following have been completed:

1. The VitalsBridge instrumentation has been set up properly and is connected to any desired monitors.
2. Confirm that the appropriate version of Laerdal's LLEAP Software is downloaded and installed on the desired PC that you wish to control your Laerdal simulator.
3. Confirm the VitalsBridge Connector software has been installed and is running properly on the same Windows PC that is running LLEAP.

Power on the Patient Simulator

Power on the patient simulator and wait until it is fully initialized. Refer to the simulator's instructions for use on how to power on the patient simulator.

Power on the PC Used to Run the Patient Simulator Software

Power on the computer used to control the patient simulator. Refer to the simulator's directions for use on how to power on the computer that is used to control the patient simulator.

Power on the VitalsBridge

See page 9.

Install and Run the VitalsBridge Connector Software

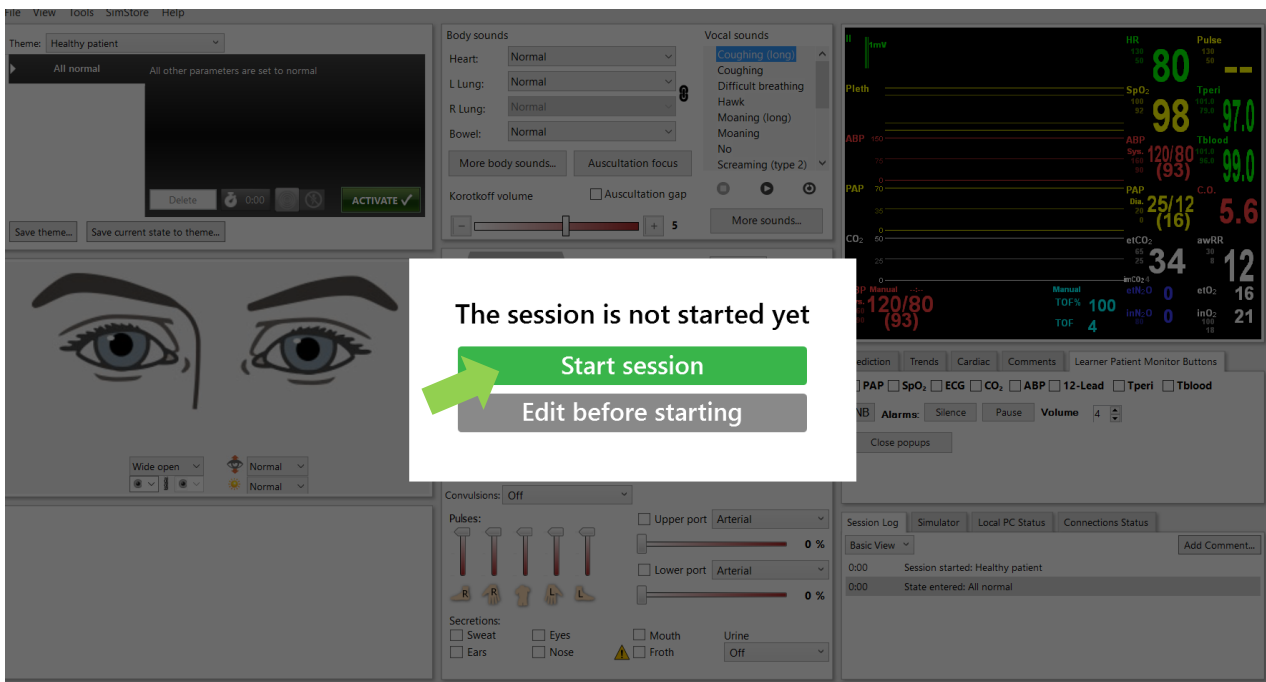
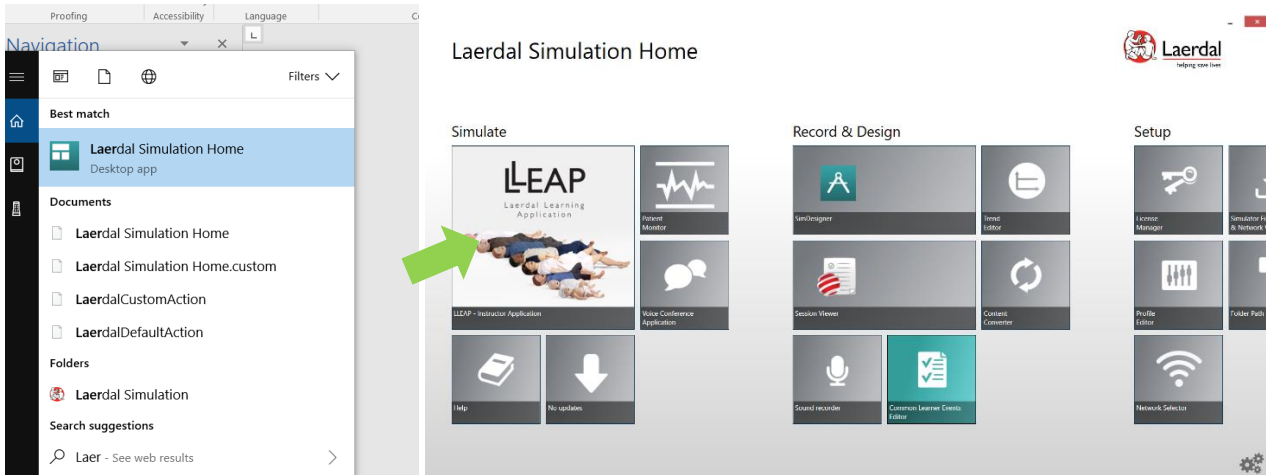
See page 24.

Run the Software Used to Control the Patient Simulator

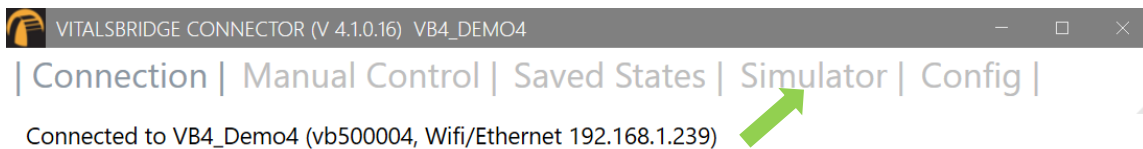
Some patient simulator manufacturers supply software to connect their manikin with the VitalsBridge. Please refer to the specific simulator manufacturer's support information.

To use the VitalsBridge with Laerdal's manikins, open the 'Laerdal Simulation Home' software, select LLEAP and begin a new session. Refer to the simulator's directions for use on how to appropriately run the software used to control the patient simulator.

VitalsBridge Directions for Use

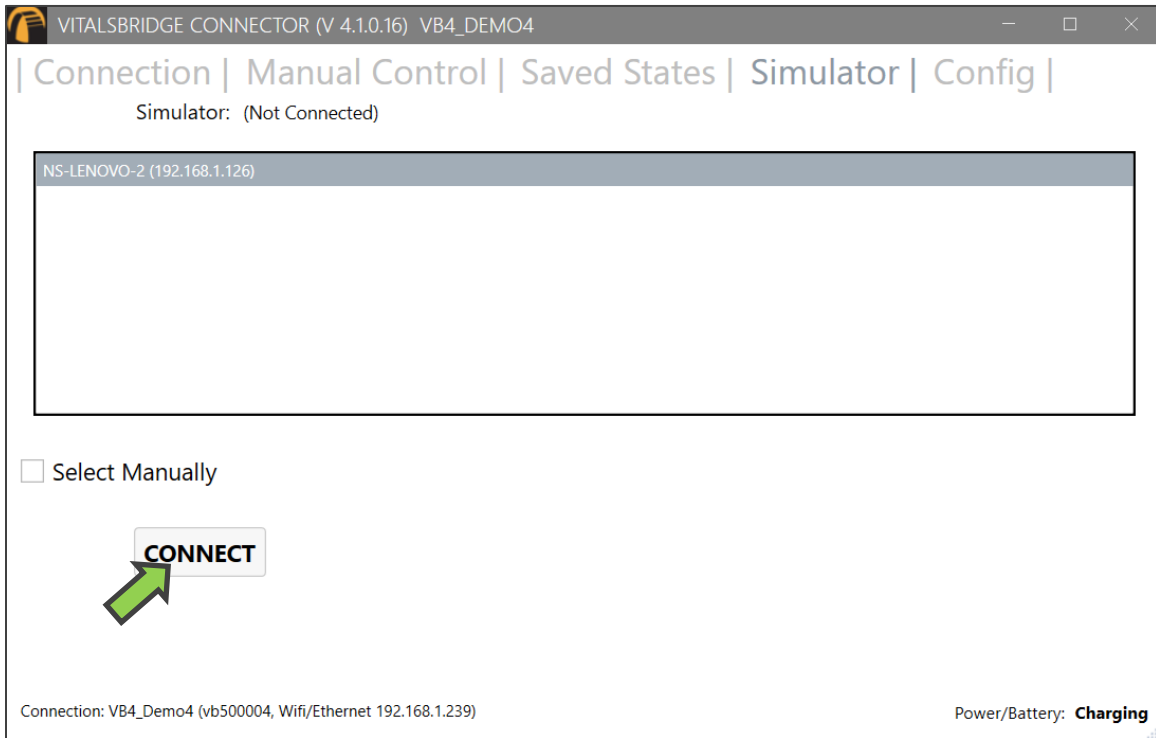


Ensure the computer can connect to a patient simulator over a network. Then, select the “Simulator” tab in the VitalsBridge Connector software.



VitalsBridge Directions for Use

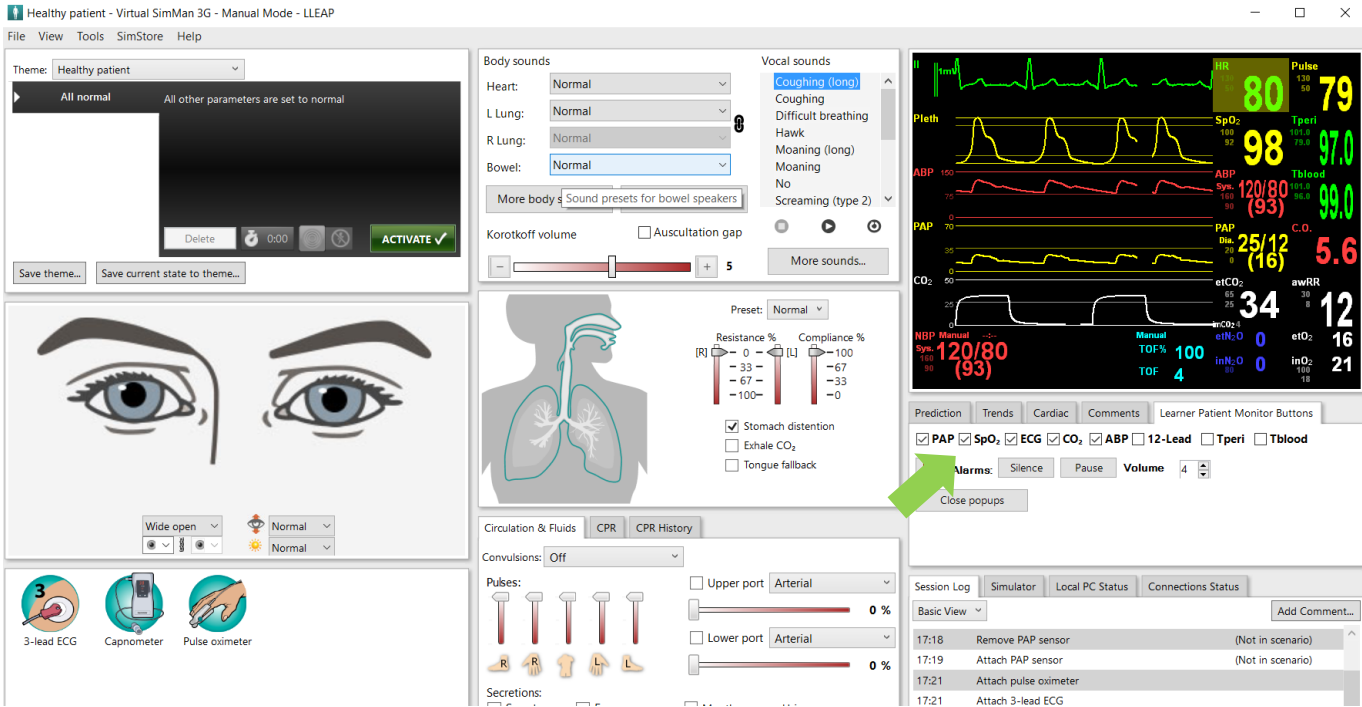
Select the appropriate patient simulator that is reported in the dialog box and select CONNECT (if Laerdal's LLEAP software is running, it should automatically appear in the menu).



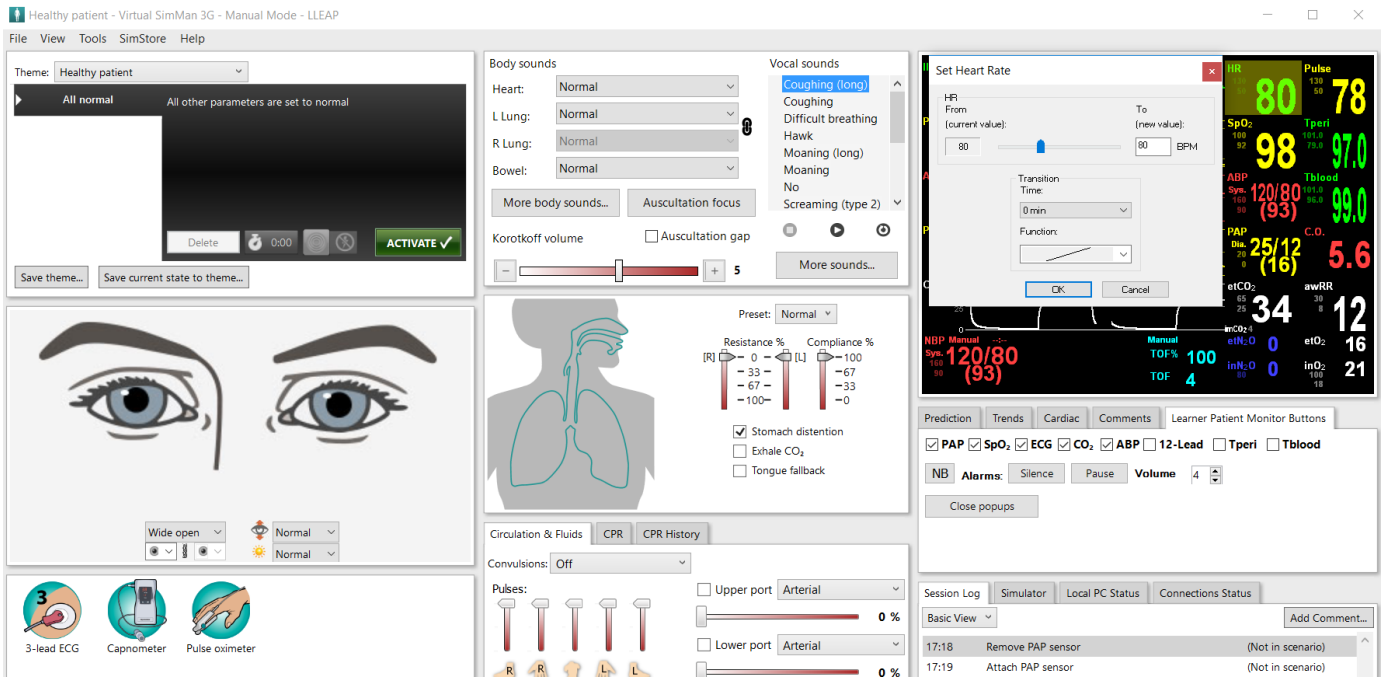
VitalsBridge Directions for Use

Control Vital Signs for the VitalsBridge and the Patient Simulator

Use the patient simulator's application to control whether ECG leads are placed, capnography is enabled, and whether the SpO₂ probe in place by checking the "Learner Patient Monitor Buttons" on the Laerdal control panel for the vital signs you would like to control.



Vital signs set in LLEAP will be communicated to the VitalsBridge Connector software. If the VitalsBridge is connected and configured with a real patient monitor, the vital signs will be updated.



Refer to the patient simulator's directions for use for more detailed instructions on how to control the vital signs.

Hints for Increasing Simulation Realism

Props

Various “props” can be used to enhance simulation experience when using the VitalsBridge. None of these props are necessary for the VitalsBridge to run.

Only one prop is included with your VitalsBridge. This is the mock SpO₂ probe that is described on page 12. This is also the only prop that is connected to the VitalsBridge. When connected to the SpO₂ adapter, the probe must be on a finger of some sort for an SpO₂ reading to be displayed on the patient monitor (simulating how a real SpO₂ probe would need to be on a patient finger for a reading to be displayed).

Additional props that may be used but that do not come with the VitalsBridge may include instruments used to measure NBP, temperature, ECG, and other vital signs displayed on the patient monitor. While these props may be used, they should NOT be plugged into the VitalsBridge or the patient monitor.

VitalsBridge Placement

To make the experience more realistic for the learner, consider placing VitalsBridge out of sight, while simultaneously making it appear that the patient monitor cables are placed from the patient monitor to the manikin (or standardized patient), despite the actual patient monitor cables are connected to the VitalsBridge. Suggested placement locations include behind the monitor, underneath a manikin, etc.

Frequently Asked Questions

General Use and Connectivity

Q: Who do I contact for customer support?

A: Please contact Dynasthetics LLC in the USA, phone: +1-435-200-3402 or +1-801-484-3820, email: support@vitalsbridge.com. Also see www.vitalsbridge.com.

Q: Is my monitor compatible with the VitalsBridge?

A: There are many different brands and thousands of different configurations of vital signs monitors. The VitalsBridge is compatible with most brands and models. The VitalsBridge is now compatible with side-stream and mainstream capnography technology, though mainstream capnography capabilities require special configuration prior to shipment. The VitalsBridge requires some specific cables and configuration for a vital signs monitor's non-invasive blood pressure cuff, SpO₂, invasive blood pressure, and temperature. Refer to www.vitalsbridge.com for information on how to purchase VitalsBridge-compatible patient monitor cables.

Q: Is the VitalsBridge compatible with Laerdal patient simulators that can run the LLEAP software?

A: Yes, the VitalsBridge is LLEAP compatible. However, when installing the VitalsBridge software, ensure that the correct version is chosen (i.e., choose the LLEAP compatible installer if running with LLEAP).

Q: Is the VitalsBridge compatible with Laerdal patient simulators that run on SimPad?

A: The VitalsBridge is **not** SimPad compatible. However, many Laerdal patient simulators that run on SimPad also run on LLEAP, which is compatible with the VitalsBridge. Contact Laerdal for additional details.

Q: How long will the VitalsBridge run on a fully charged battery?

A: Typical running times are 1.5 to 4+ hours, depending on how often non-invasive blood pressure measurements are made and whether capnography simulation is turned on in the VitalsBridge software.

Q: What is the recommended sequence for starting the VitalsBridge?

A: If you have been running the manikin for more than 30 minutes prior to starting the VitalsBridge, it is recommended that you exit the Instructor Application software, and power off the manikin. Power on the patient simulator and wait for it to initialize fully, start the software that is used to control the patient simulator, power on the VitalsBridge, and start the VitalsBridge Connector application.

SpO₂

Q: My monitor is not giving a SpO₂ reading with the cable adapter kit that I received with my VitalsBridge. What is wrong?

A: Check to be sure you don't have the mock probe plugged in but not on a finger. If that is not the case, you may have an incorrect SpO₂ cable kit. Please contact Dynasthetics support.

Q: There is a lot of noise on my SpO₂ waveform reading. What is wrong?

A: If your manikin has a RFID reader (e.g., for drug and airway management device recognition), try disabling the RFID through the application that is used to control the patient simulator.

Non-invasive Blood Pressure

Q: I am not getting a reading from my non-invasive blood pressure monitor. What should I check?

VitalsBridge Directions for Use

A: First check that the cable from the monitor is secure and not leaking at both the monitor's connector and at the VitalsBridge connector. Ensure that NBP tubing and connections are not leaking. Ensure that none of the cuff tubes are kinked. Ensure that the VitalsBridge is running.

CO₂

Q: How long will each CO₂ cartridge last?

A: When the VitalsBridge is running, a 16g CO₂ cartridge will last 8 hours or longer, depending on the simulation. When the regulator is not in use, turn the regulator to off, disconnect the tubing connection from the luer fitting on the VitalsBridge and securely fit the cap on the end of the regulator tubing, without over tightening.

Q: My CO₂ regulator has a partially full cartridge that I wish to empty and dispose, what do I do?

A: Turn the regulator to off. Disconnect the regulator from the VitalsBridge by unscrewing the luer fitting. Hold the tubing approximate 3-5 cm away from the end of the tubing. *Slowly* turn the knob on the regulator to let the gas escape at a low flow rate from the outlet of the regulator until no more gas release is heard or felt. Take care when removing the empty cartridge. It may be very cold.

Q: My monitor is not showing a CO₂ waveform, what should I check?

A: Check that the CO₂ cartridge is not empty. Ensure the monitor is connected correctly to the VitalsBridge (side-stream connection cables are used with side-stream monitors and mainstream adapters are used with mainstream monitors). If you are using a mainstream monitor, verify that your VitalsBridge is configured for mainstream sampling (the serial number listed on the bottom of the device is VB35xxxx). Ensure that CO₂ is enabled in the software. If using the Manual Tab of the VitalsBridge Connector, ensure that "Force CO₂ Off" is unchecked. If using a LLEAP patient simulator, ensure that the CO₂ checkbox is checked in the "My Learner Buttons" section. Consider re-calibrating the CO₂.

Q: Is the VitalsBridge compatible with patient monitors that use mainstream capnography?

A: Some VitalsBridge units are compatible with mainstream capnography (units with serial # 35xxxx are mainstream capable, while units with serial # vb30xxxx are sidestream only). Side-stream only units may be upgraded to mainstream capable units, contact support@vitalsbridge.com for details.

Q: Can my mainstream CO₂ capable VitalsBridge also simulate side-stream CO₂?

A: Yes, a small adapter that is provided with the VitalsBridge must be placed between the sampling line connection and the VitalsBridge "CO₂ out" port.

Invasive Blood Pressure

Q: I see a blood pressure waveform on the vital signs monitor, but there is no number being shown. What is the problem?

A: The monitor's blood pressure must be zeroed. In the software that is used to control the patient simulator, ensure the invasive blood pressure waveform is set to "flat line" (i.e., the set pressure is a continuous value of zero over time). On the patient monitor, apply the "zero blood pressure" function, making certain you select the correct transducer. Disable "flat line" for the blood pressure waveform in the software that is used to control the patient simulator

Q: The invasive blood pressure readings on my monitor are inaccurate (more than 5-10 mmHg from the set value). What is wrong?

VitalsBridge Directions for Use

A: Ensure that the monitor has been properly zeroed by enabling the “flat line” feature on the invasive blood pressure waveform of interest in the software that controls the patient simulator. Then use the zero blood pressure feature on the vital signs monitor (consult the vital signs monitor documentation).

Q: My monitor came with a cable that connects from the monitor to an invasive blood pressure transducer. However, it does not fit the invasive blood pressure cables or connections on the VitalsBridge. How do I find the right connector?

A: You may purchase the proper invasive blood pressure cable kit for your Vital Signs monitor that is compatible with the VitalsBridge. Consult www.vitalsbridge.com (or e-mail support@vitalsbridge.com) for additional information.

Q: How do I simulate a pulmonary-capillary wedge pressure with the VitalsBridge?

A: Ensure the software that controls the patient simulator can send PCWP (e.g., pre-LLEAP Laerdal SimMan 3G’s are incompatible with sending PCWP to the VitalsBridge). Then, follow the instructions on page 39.

Respiration by ECG Impedance

Q: I am using a 5-lead ECG on my simulator, but my simulator does not have connections for 5 leads. Will respiration work?

A: You may use the 5 ECG posts on the VitalsBridge (200 and 300 models only) to simulate an ECG with respiration impedance.

Temperature

Q: My monitor came with a cable that connects from the monitor to a temperature probe; however, it does not fit the short, white, temperature cables that connect to the VitalsBridge. How do I find the right connector?

A: You may purchase the proper temperature cable kit for your vital signs monitor. Consult www.vitalsbridge.com for additional information.