

STEP 8: ADDITIONAL FEATURES

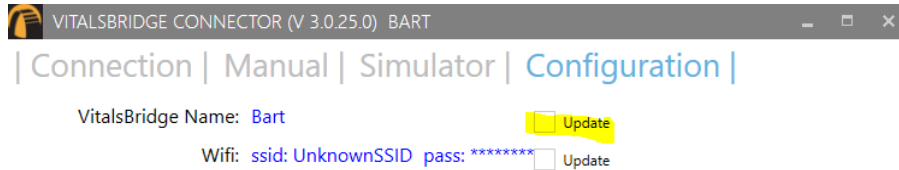
VITALSBRIDGE 300 200 AND 100

Additional Features

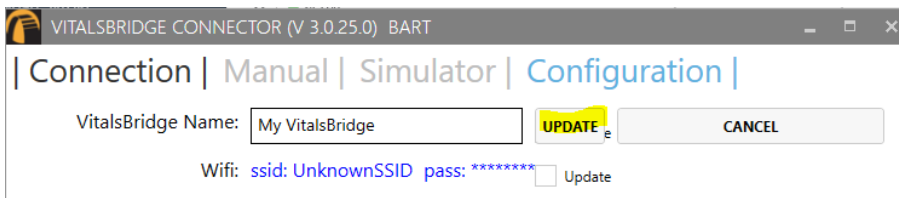
Additional Software Features

Setting the VitalsBridge Name

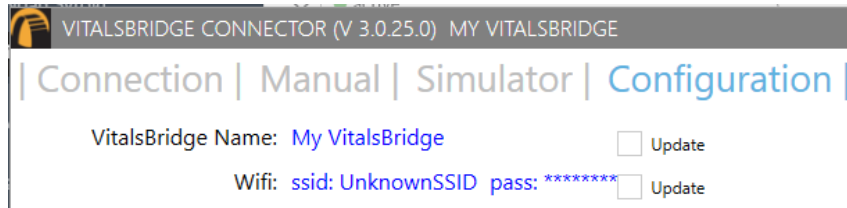
1. Navigate to the Configuration Tab of the VitalsBridge
2. Check the Update checkbox adjacent to the VitalsBridge Name.



3. Enter the new name of the VitalsBridge and press UPDATE



4. The VitalsBridge will be updated with the new name.



Simulation Props

Various “props” can be used to enhance simulation experience when using the VitalsBridge. None of these props are necessary for the VitalsBridge to run.

Only one prop is included with your VitalsBridge. This is the non-disposable mock SpO₂ probe that is described on page 15. This is also the only prop that is connected to the VitalsBridge. When connected to the SpO₂ adapter, the probe must be on a manikin’s or standardized patient’s finger (or anything opaque that will block the red source light in the mock probe) for an SpO₂ reading to be displayed on the patient monitor (simulating how a real SpO₂ probe would need to be on a patient finger for a reading to be displayed).

Additional props that may be used but that do not come with the VitalsBridge may include instruments used to measure NIBP, temperature, and any other vital signs being displayed on the patient monitor. While these props may be used, they should NOT be plugged into the VitalsBridge or the Patient Monitor.

Support

For technical assistance, contact VitalsBridge customer support:

- support@vitalsbridge.com
- 1-435-200-3402
- 1-801-484-3820